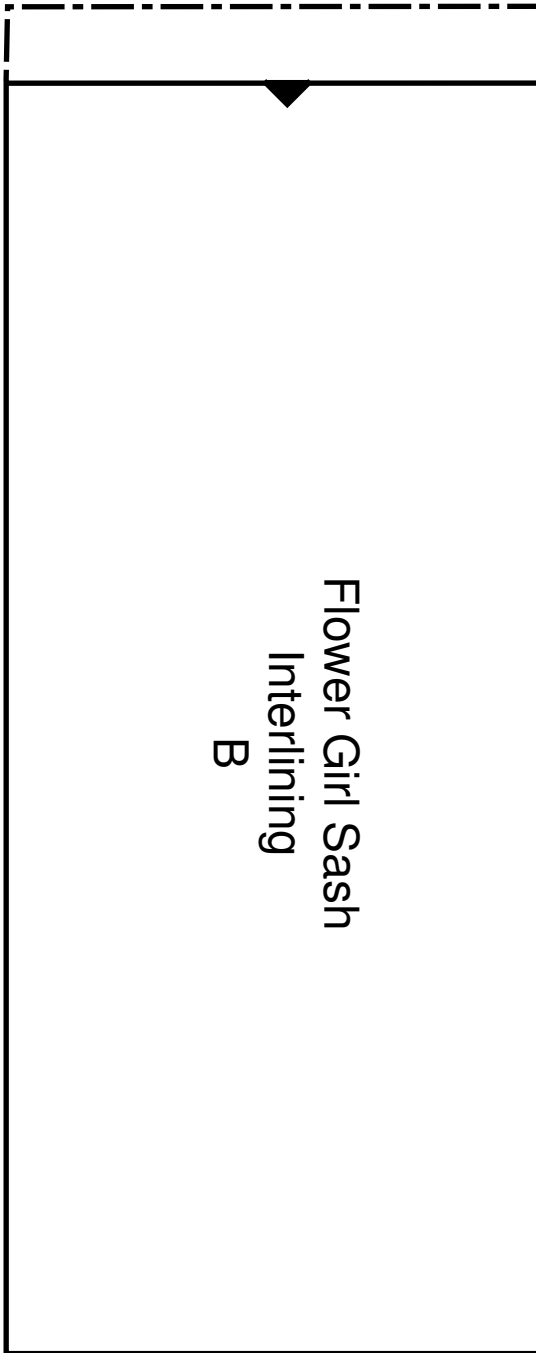


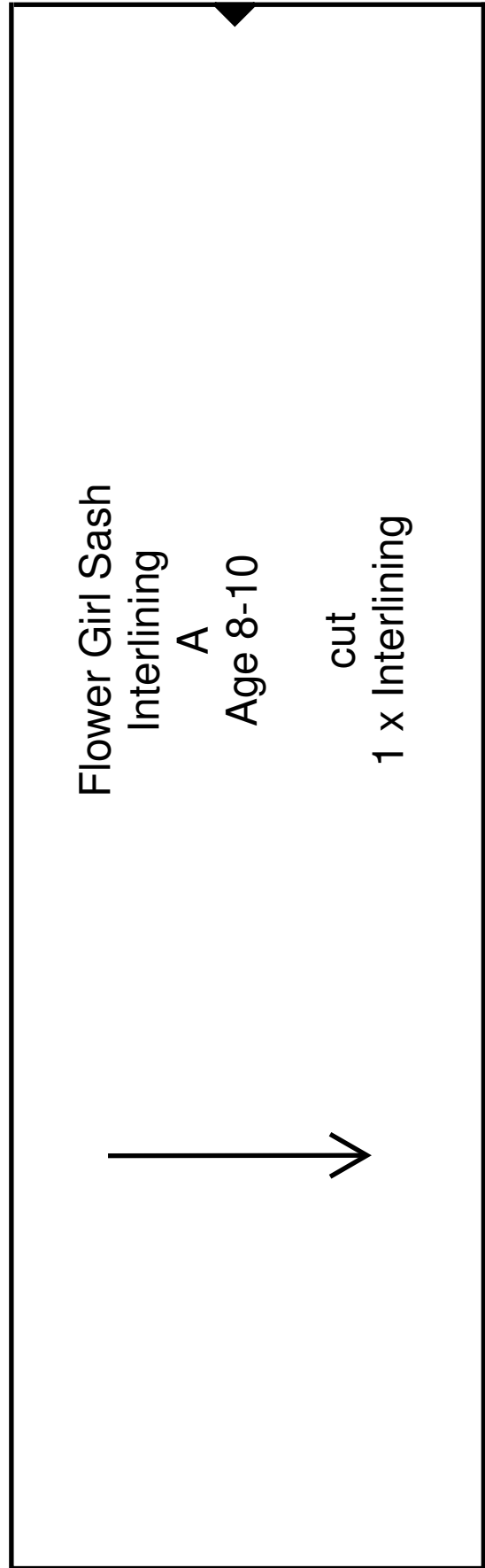
Flower Girl Dress Age 8-10



2.5 cm / 1 inch

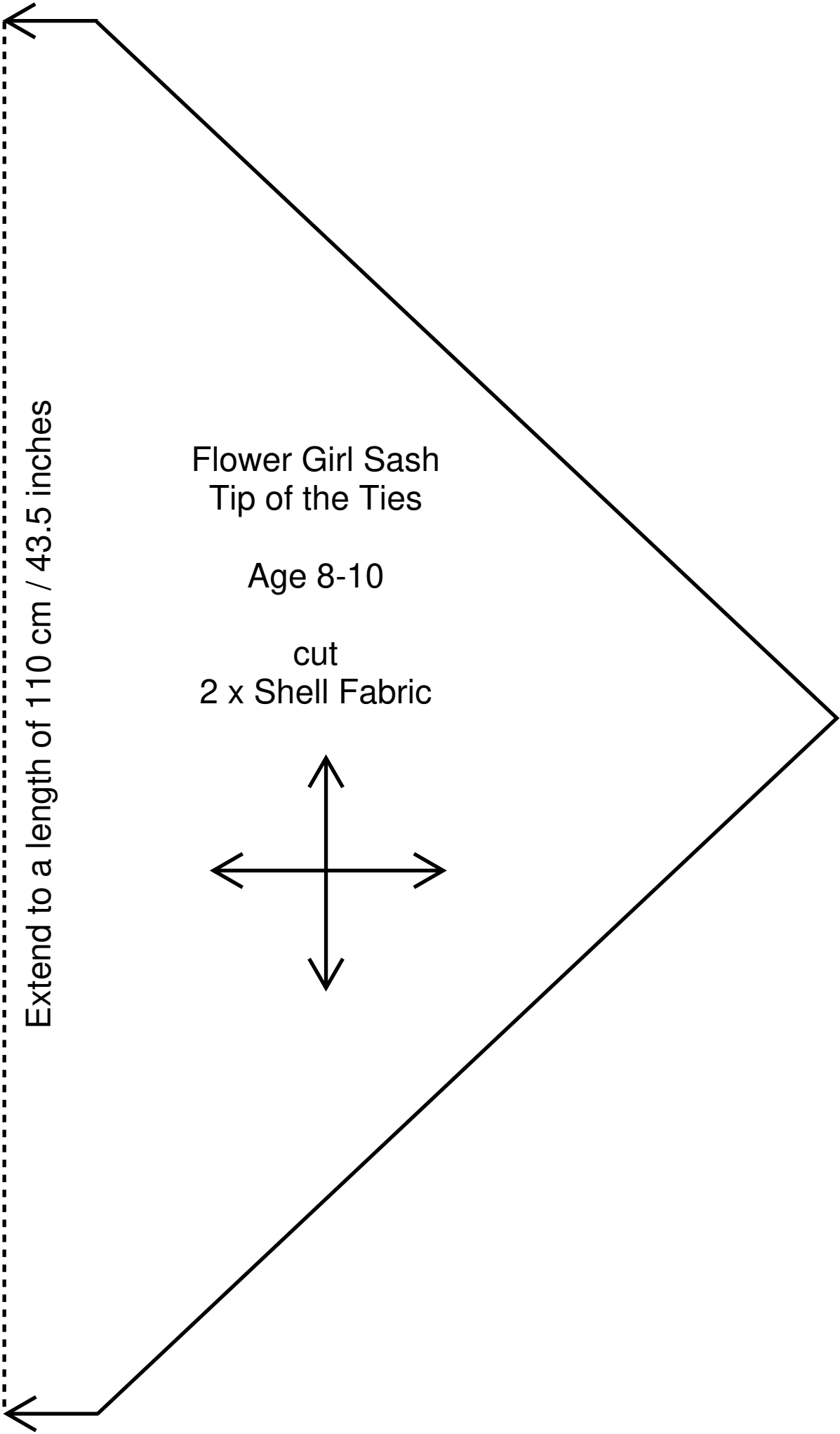


Flower Girl Sash
Interlining
B



Flower Girl Sash
Interlining
A
Age 8-10

cut
1 x Interlining



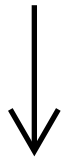
Flower Girl Sash

A

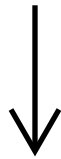
Age 8-10

cut

1 x Shell Fabric



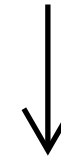
Pleat



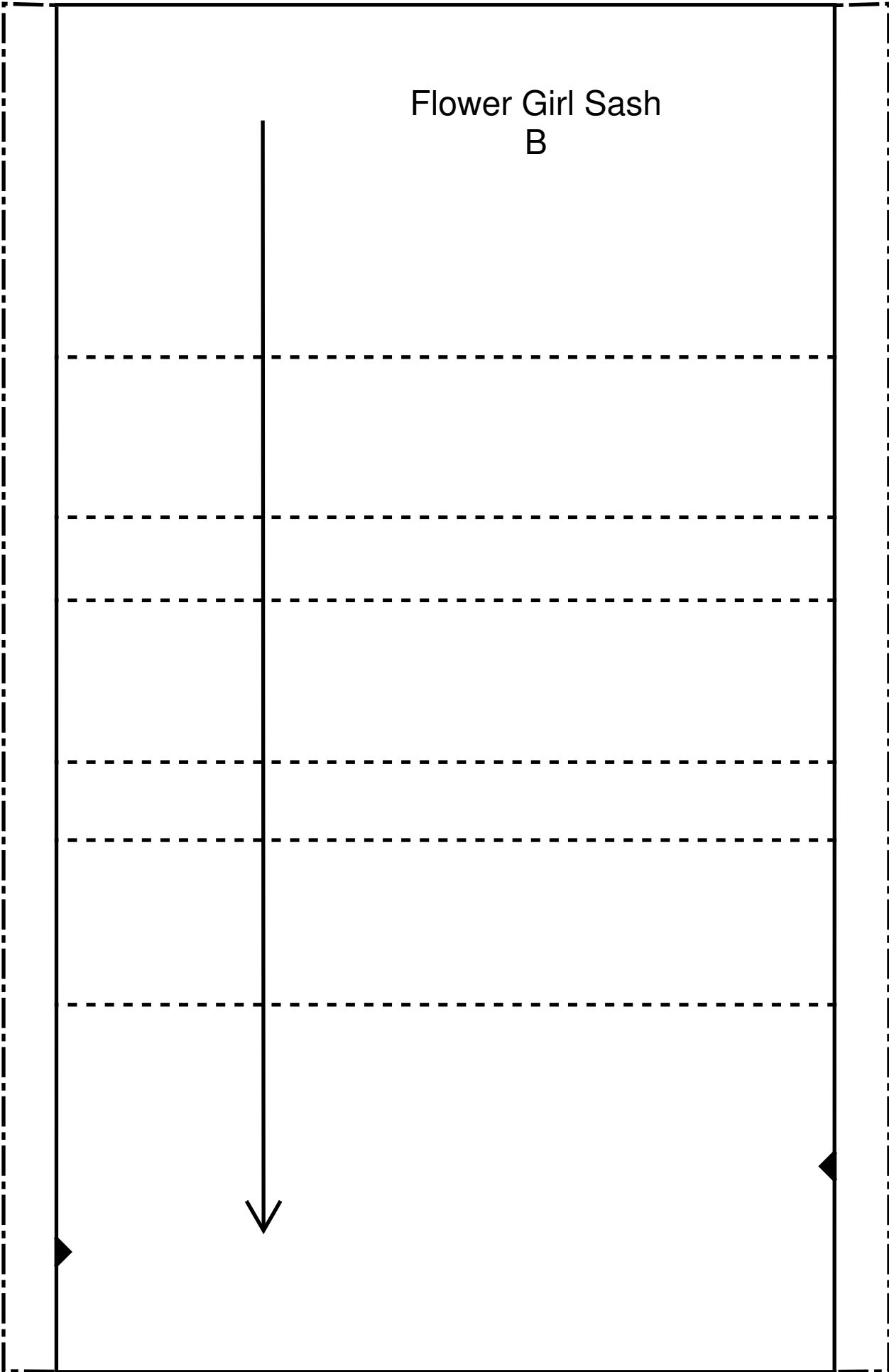
Pleat

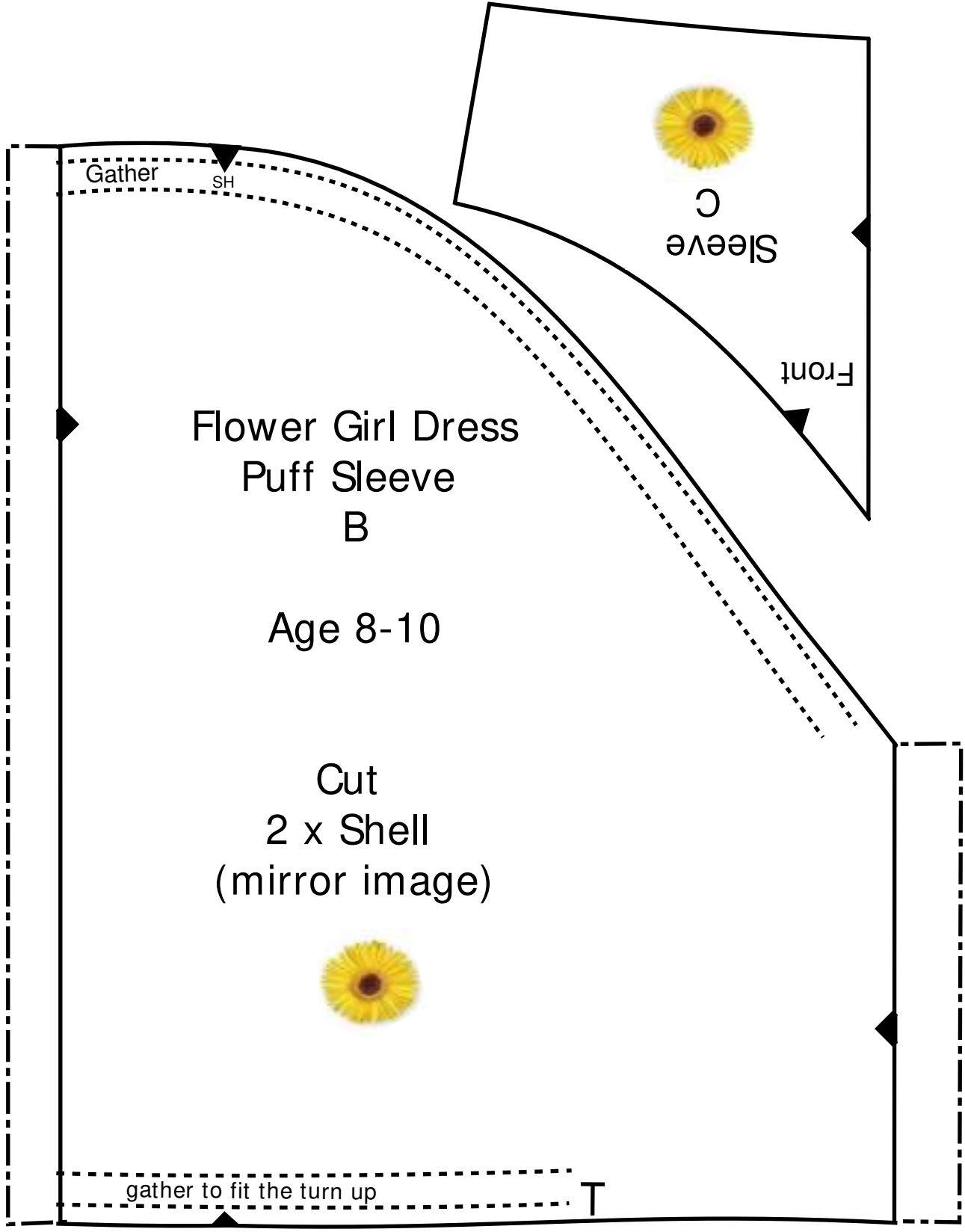


Pleat



Flower Girl Sash
B





Flower Girl Dress
Puff Sleeve
B

Age 8-10

Cut
2 x Shell
(mirror image)

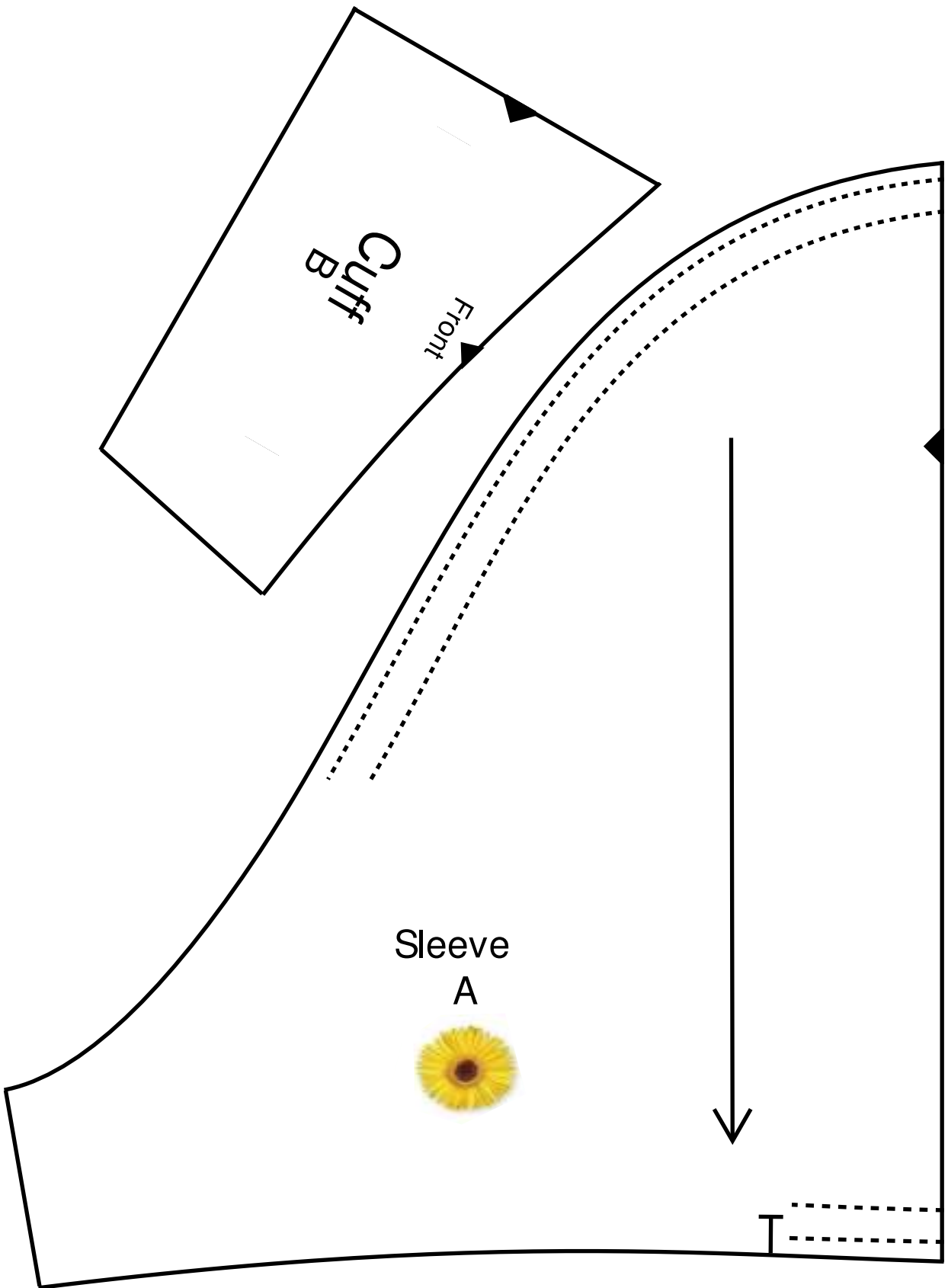
Sleeve
C

Front

Gather

SH

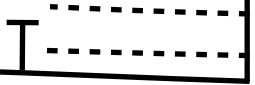
gather to fit the turn up



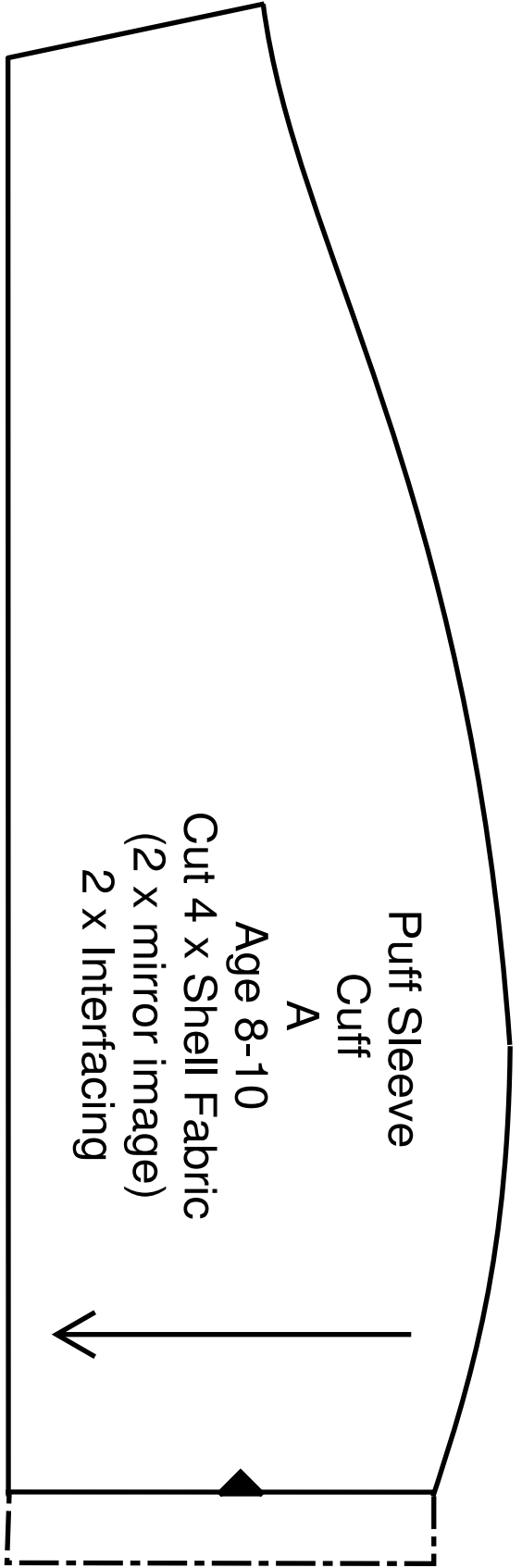
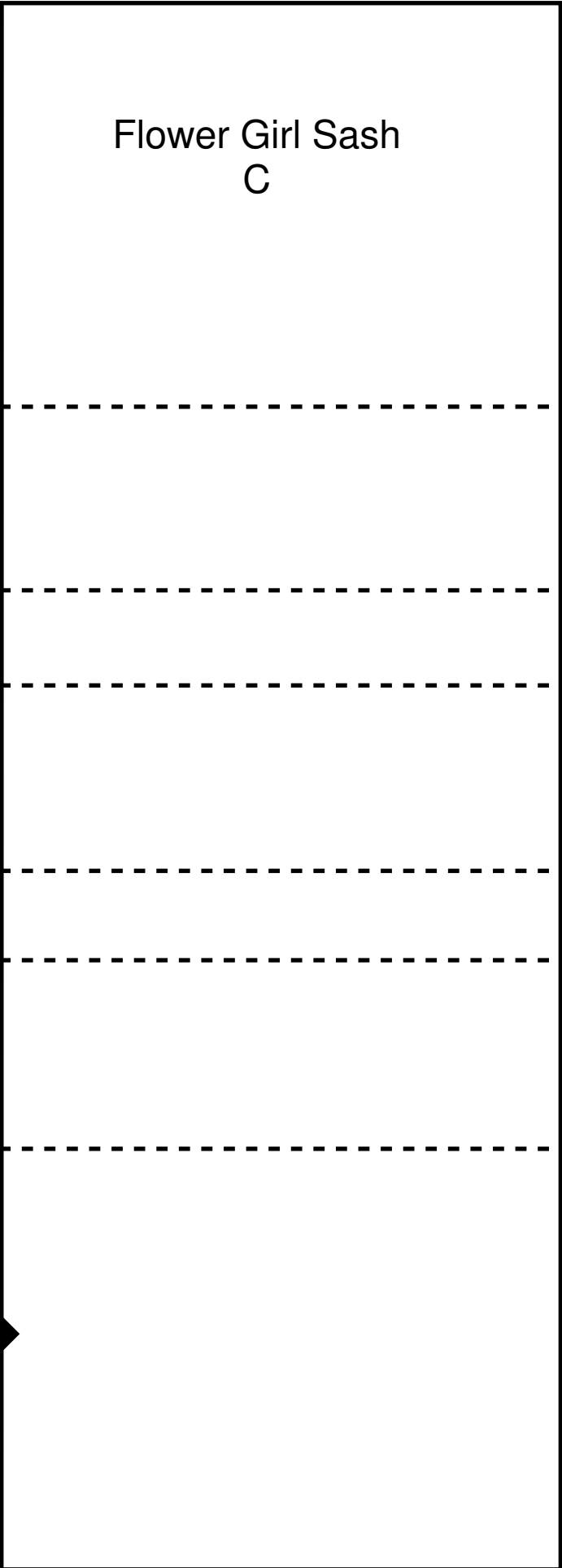
Cuff
B

Front

Sleeve
A

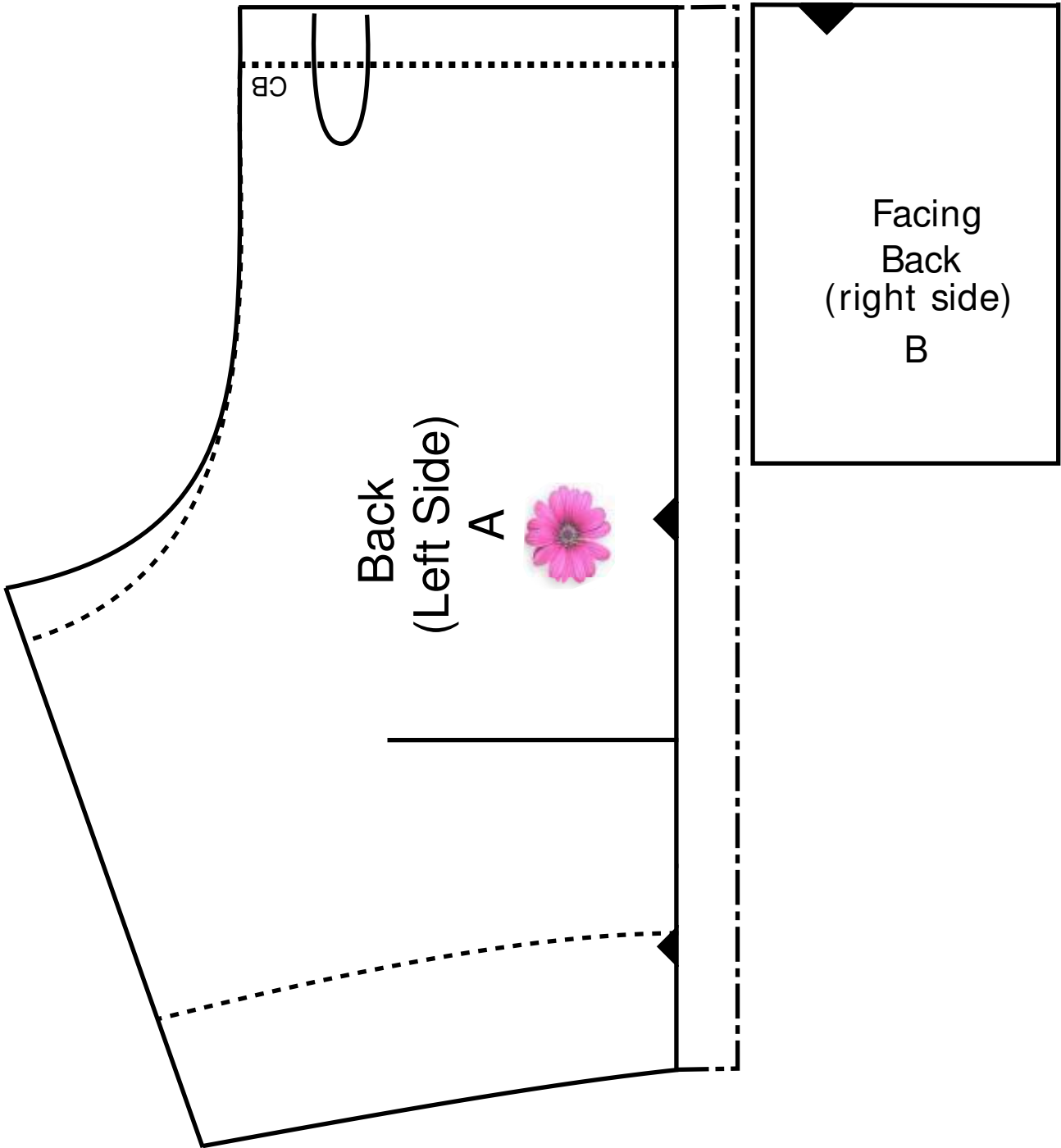


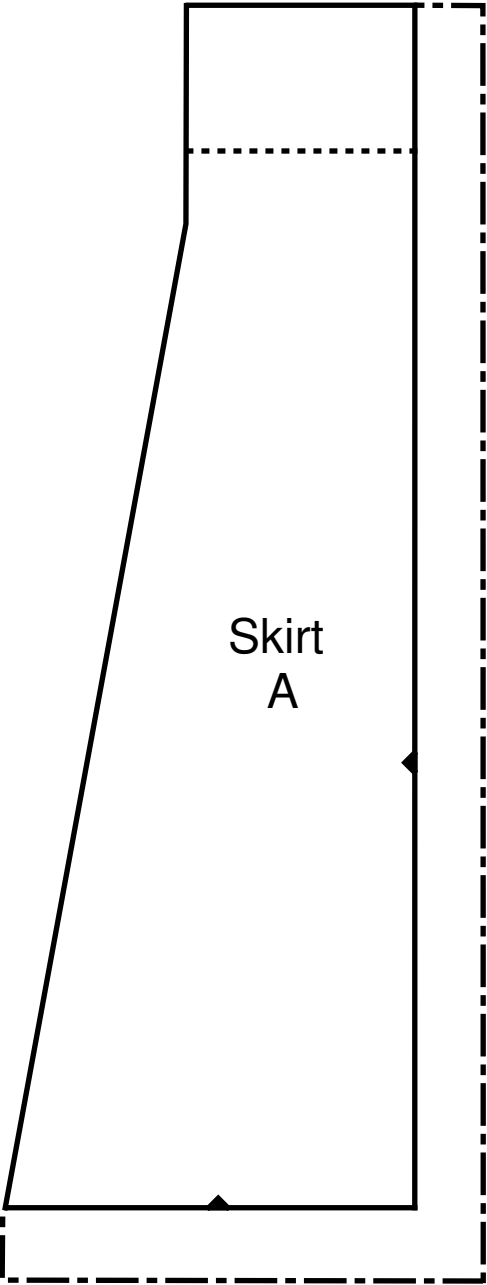
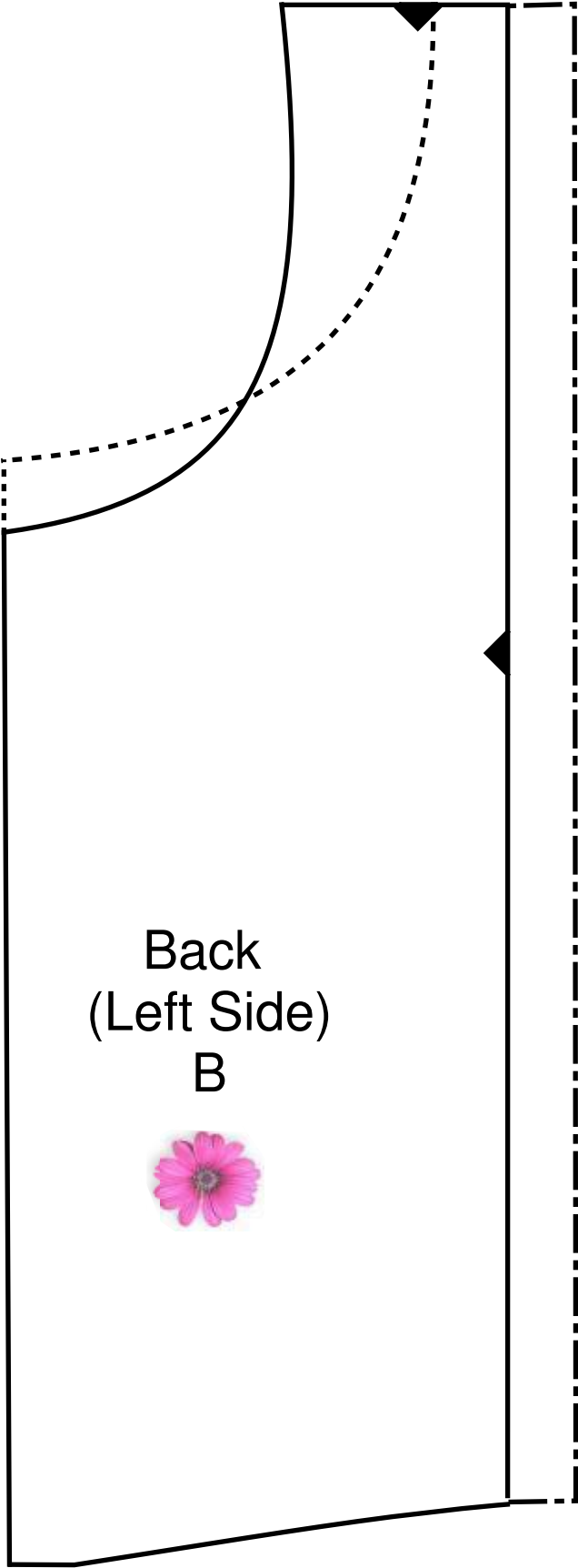
Flower Girl Sash
C



Puff Sleeve
Cuff
A

Age 8-10
Cut 4 x Shell Fabric
(2 x mirror image)
2 x Interfacing





Flower Girl Dress
Age 8-10

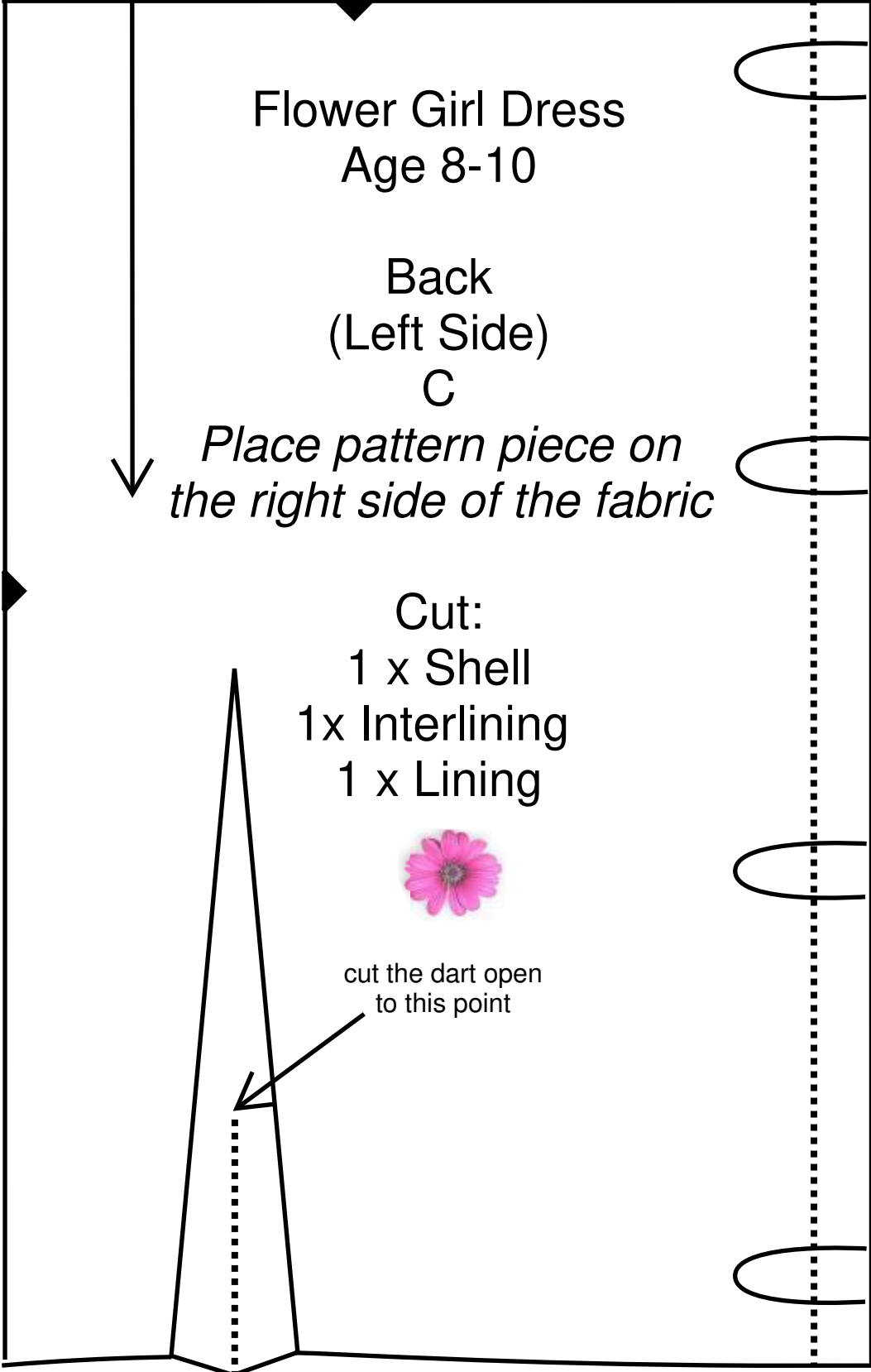
Back
(Left Side)
C

↓
*Place pattern piece on
the right side of the fabric*

Cut:
1 x Shell
1x Interlining
1 x Lining



cut the dart open
to this point

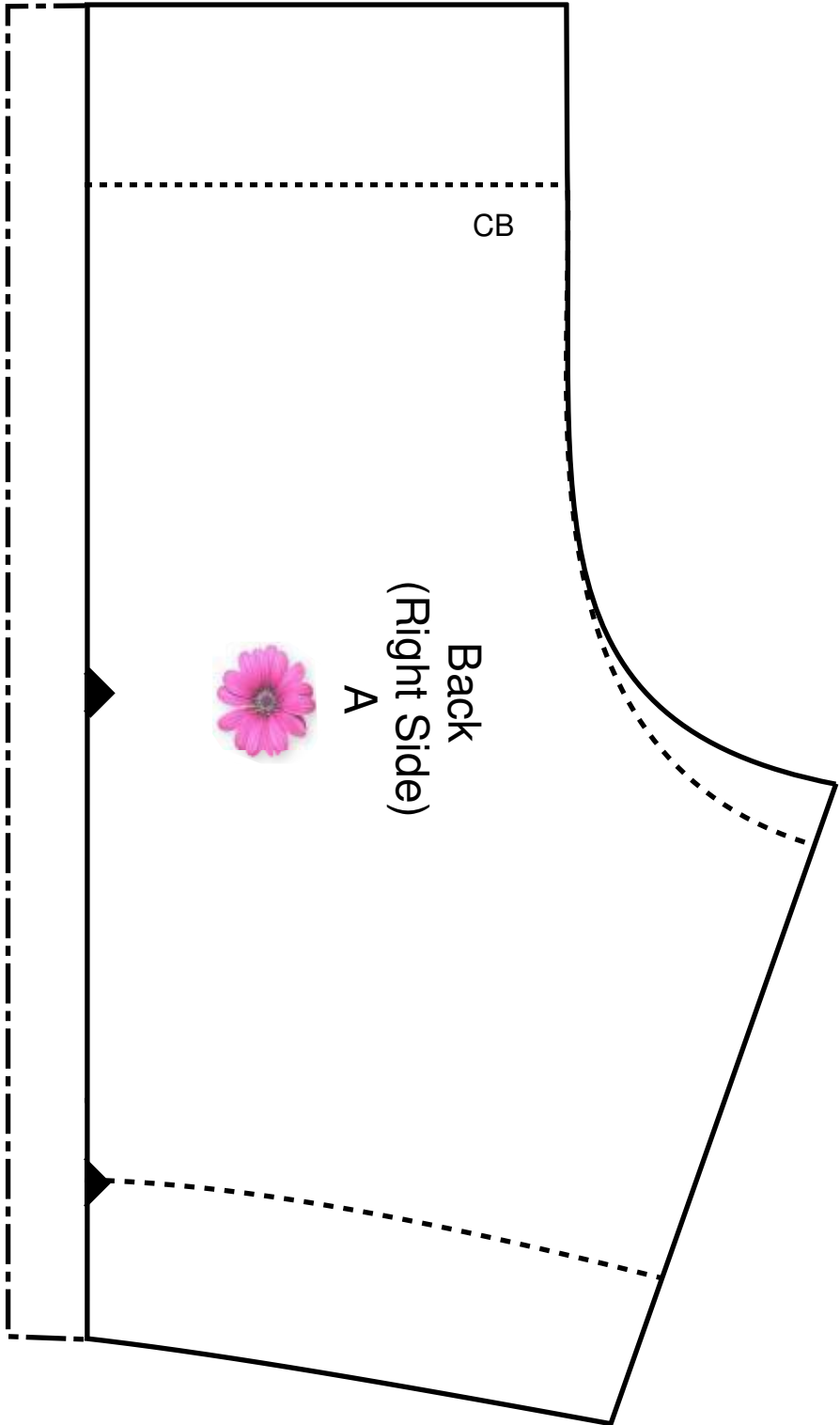
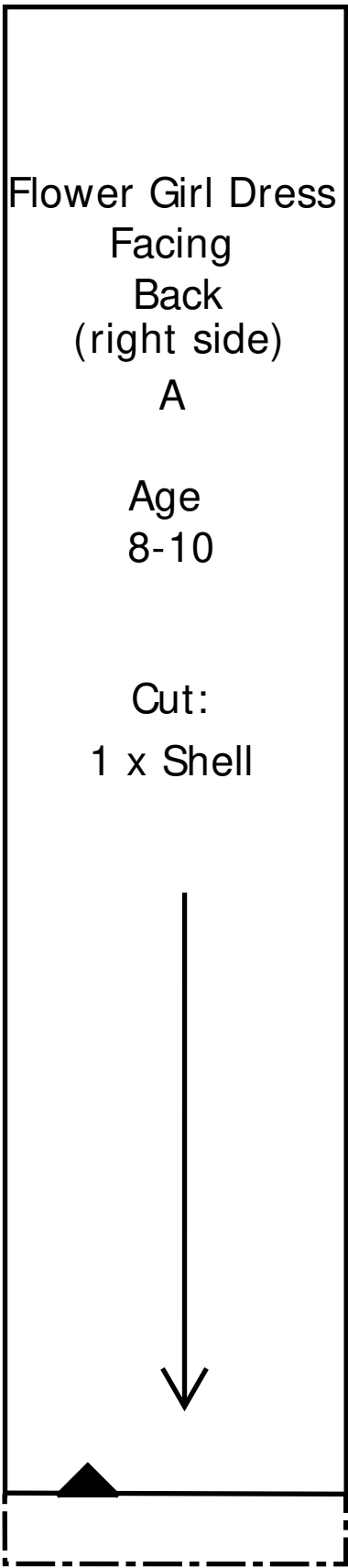


Flower Girl Dress
Facing
Back
(right side)

A

Age
8-10

Cut:
1 x Shell



CB

Back
(Right Side)
A

Flower Girl Dress
Age 8-10

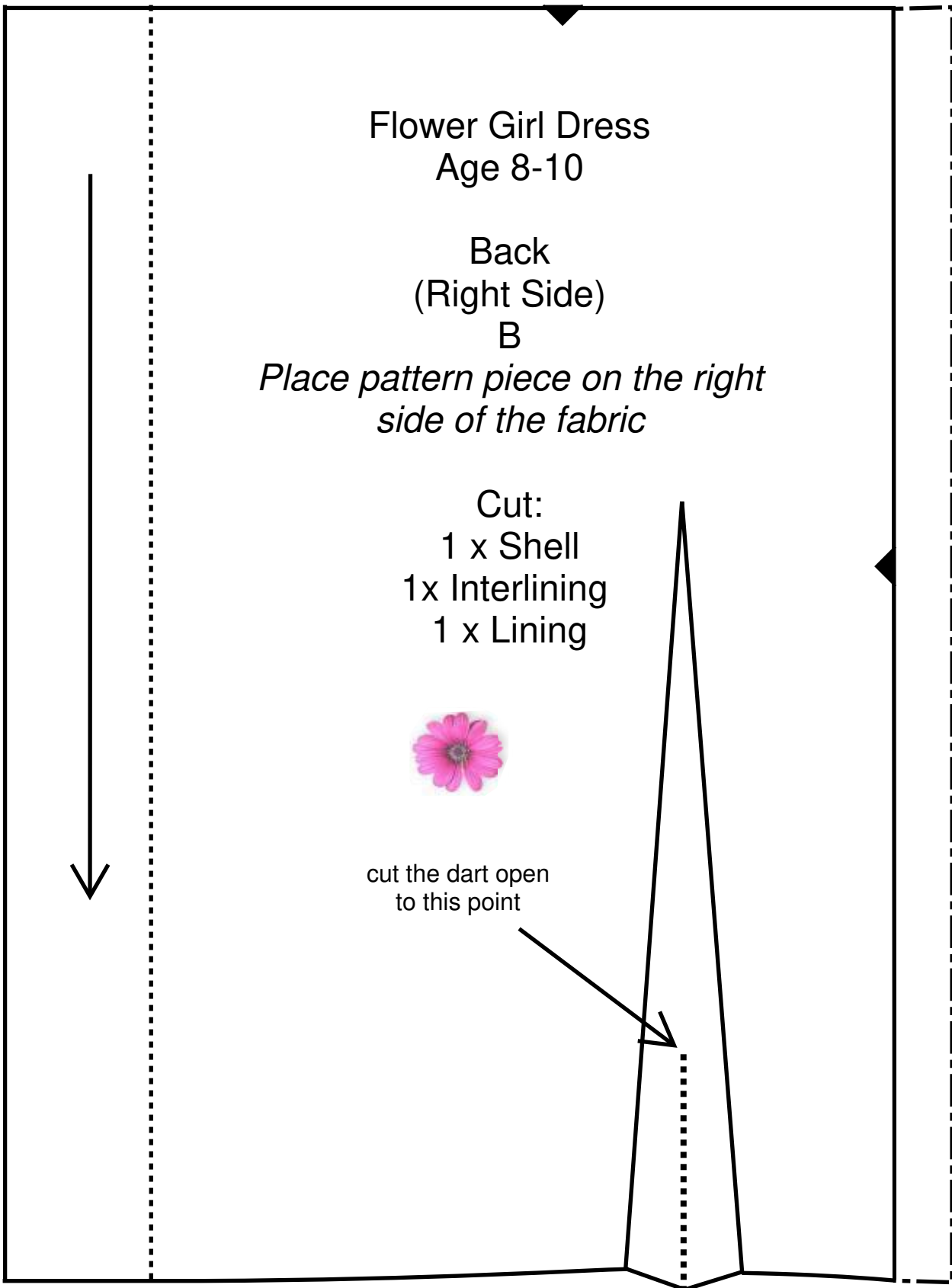
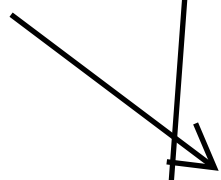
Back
(Right Side)
B

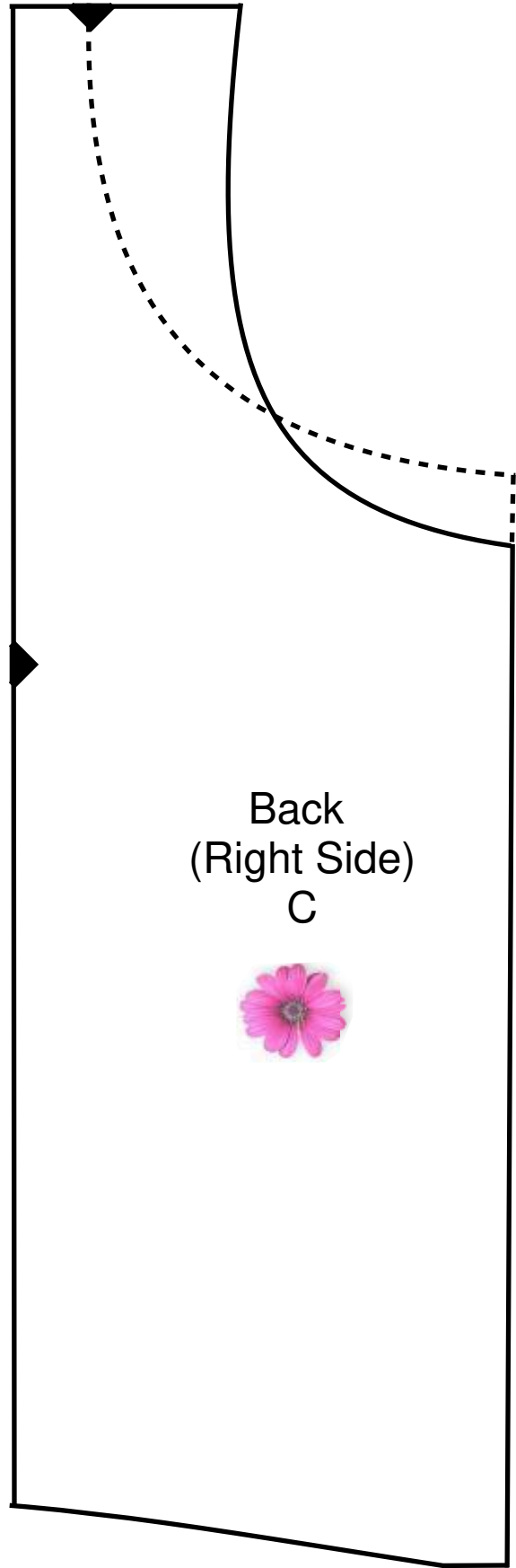
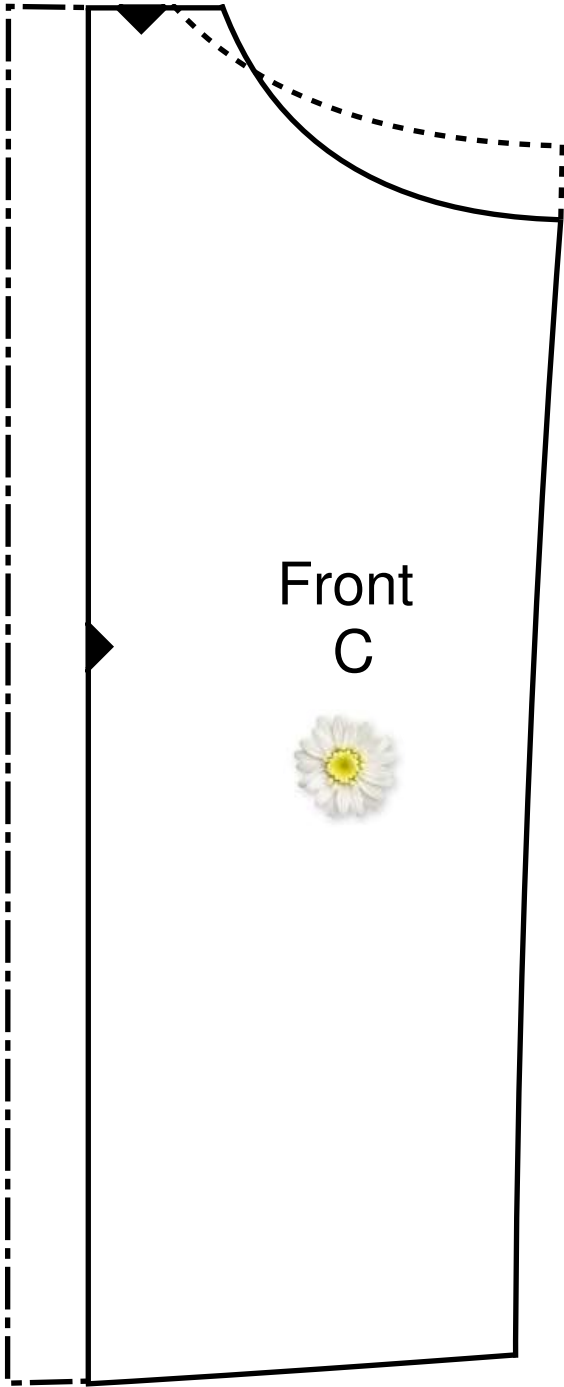
*Place pattern piece on the right
side of the fabric*

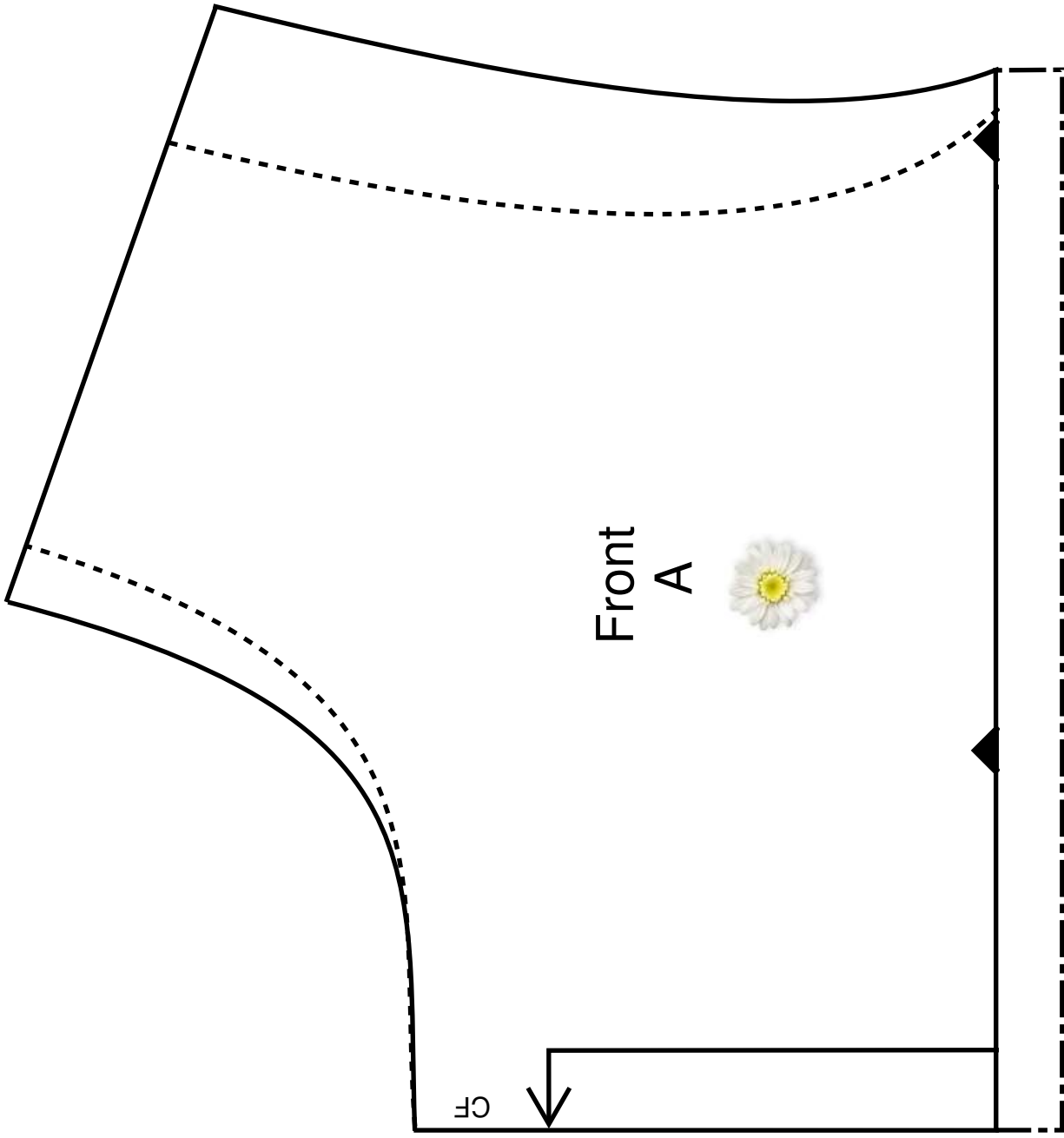
Cut:
1 x Shell
1x Interlining
1 x Lining



cut the dart open
to this point



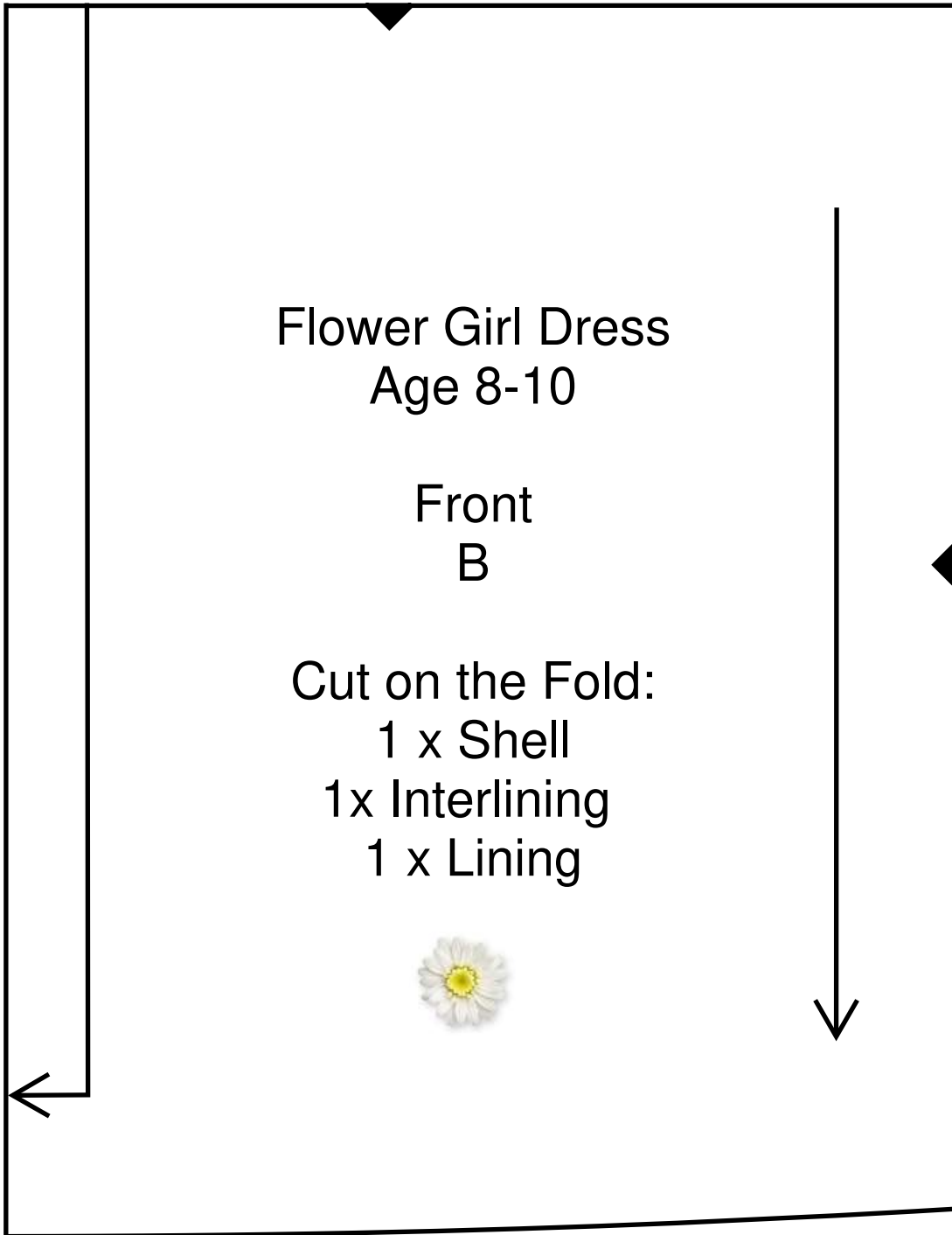


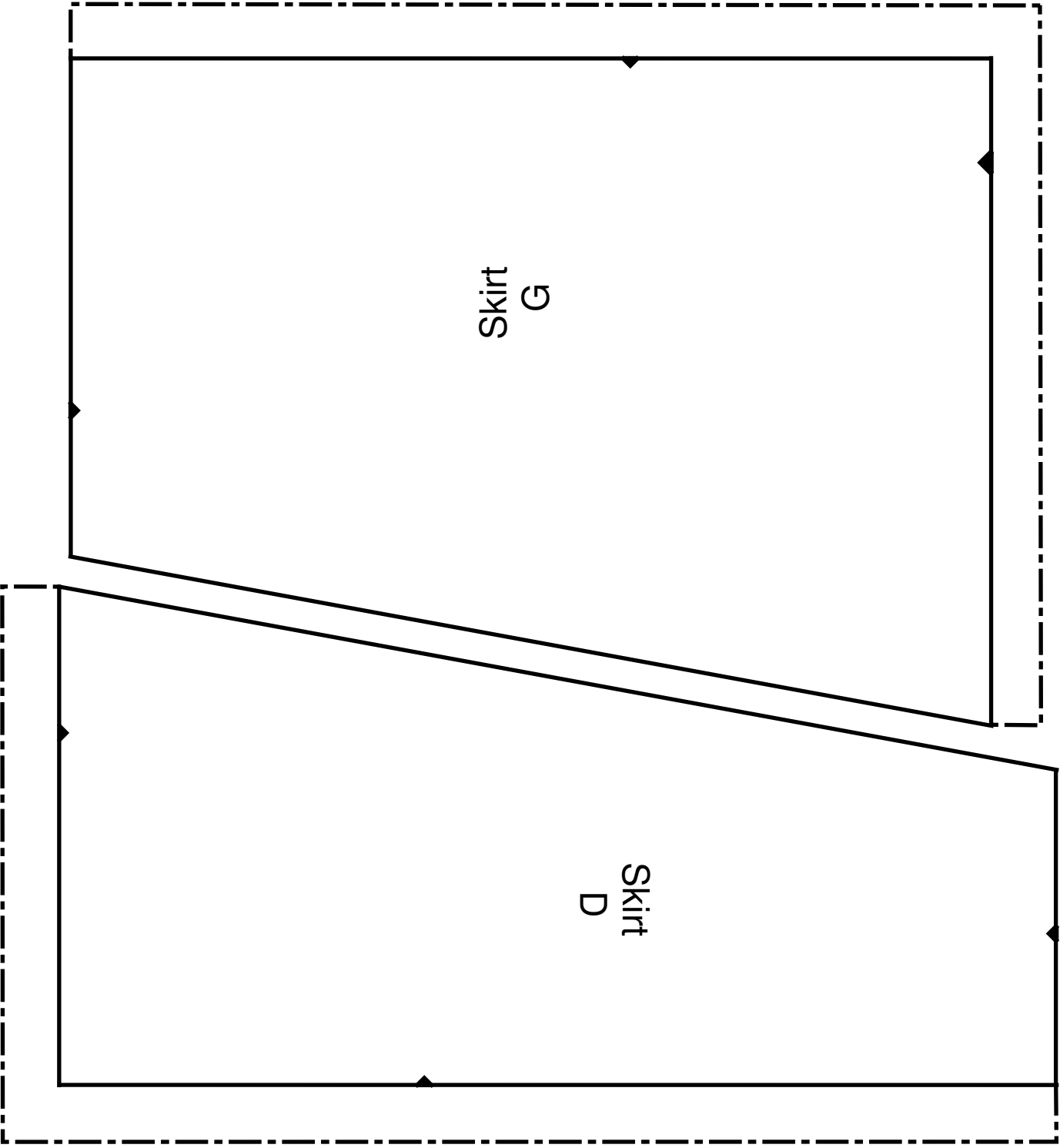


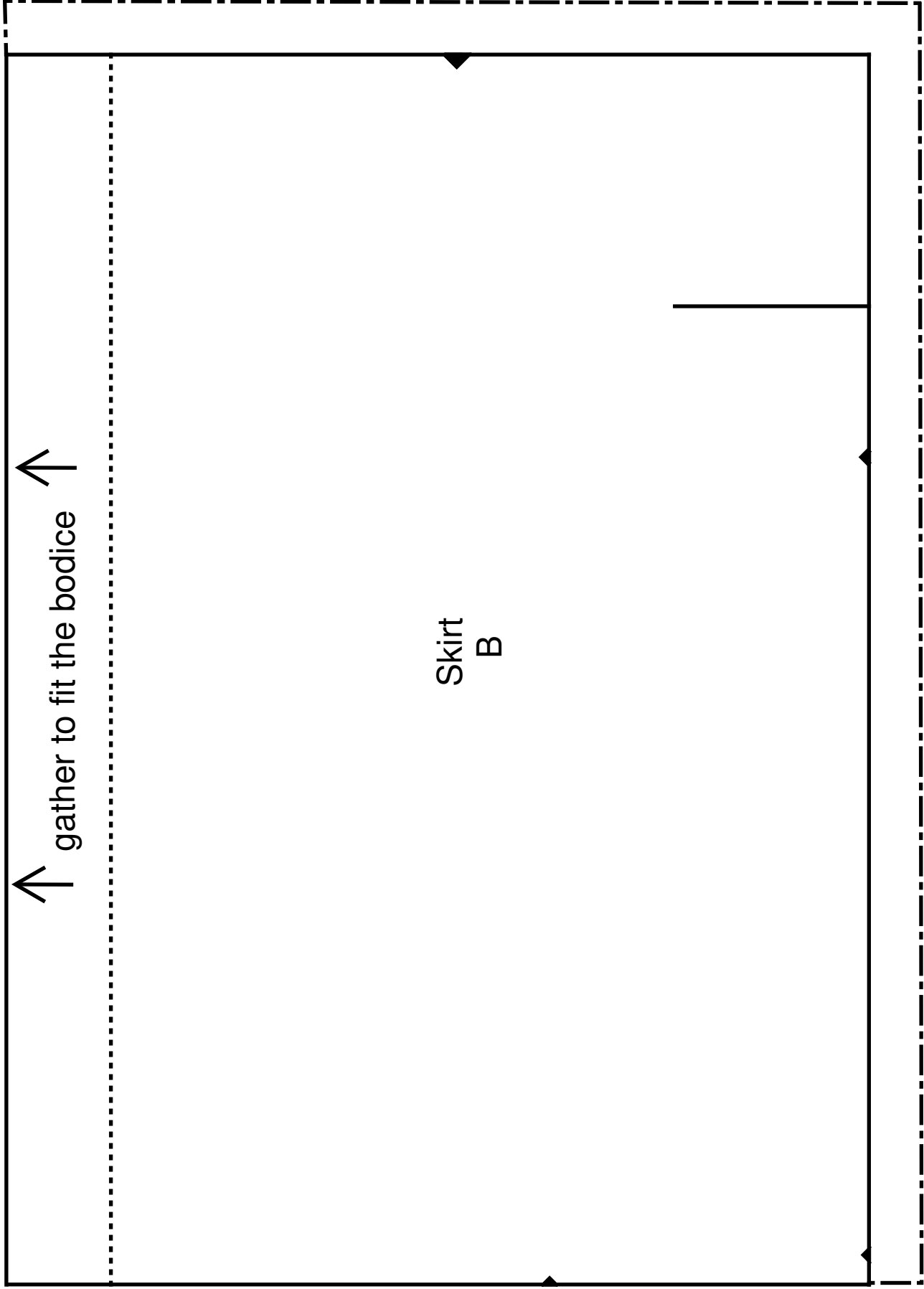
Flower Girl Dress
Age 8-10

Front
B

Cut on the Fold:
1 x Shell
1x Interlining
1 x Lining







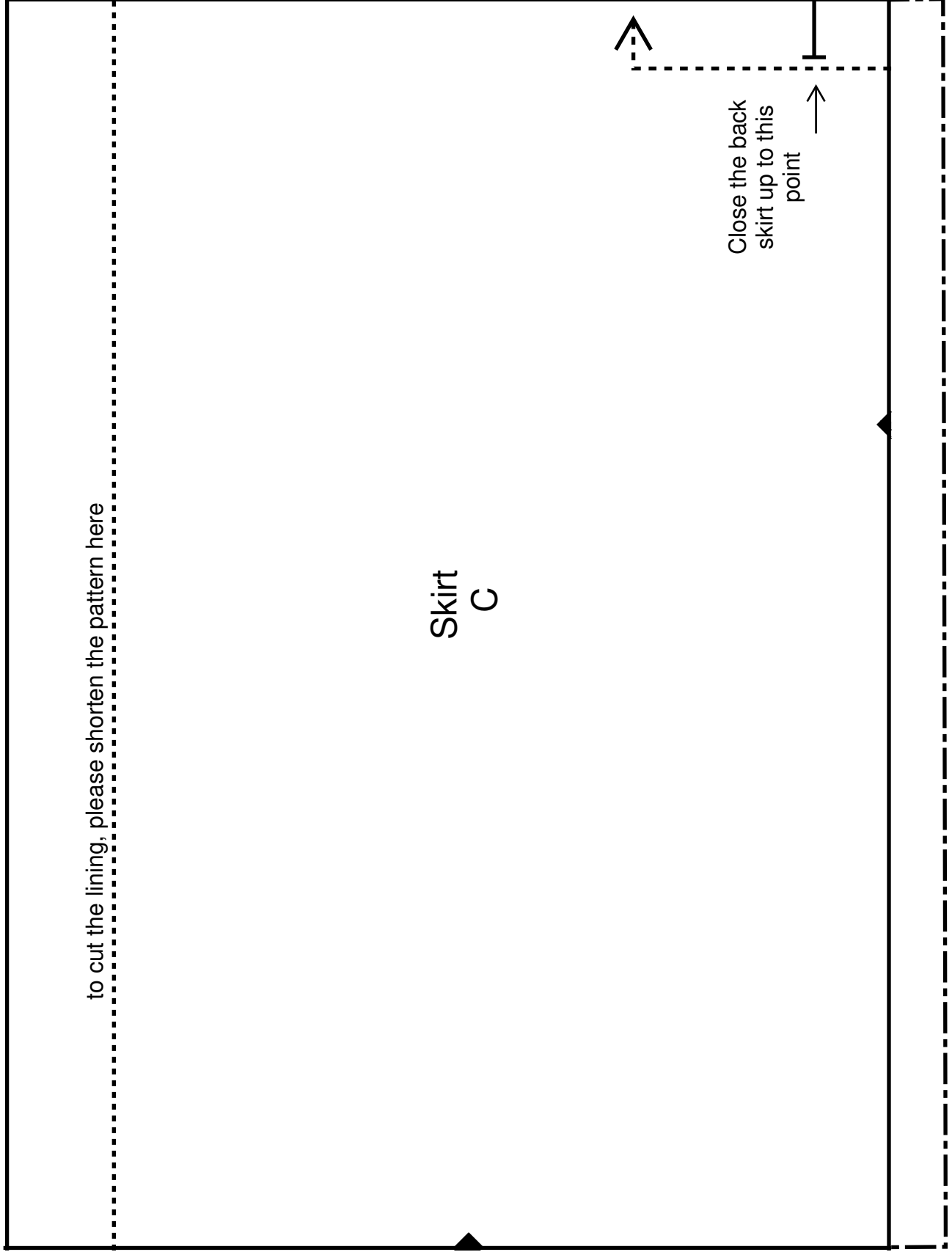
↑ gather to fit the bodice ↑

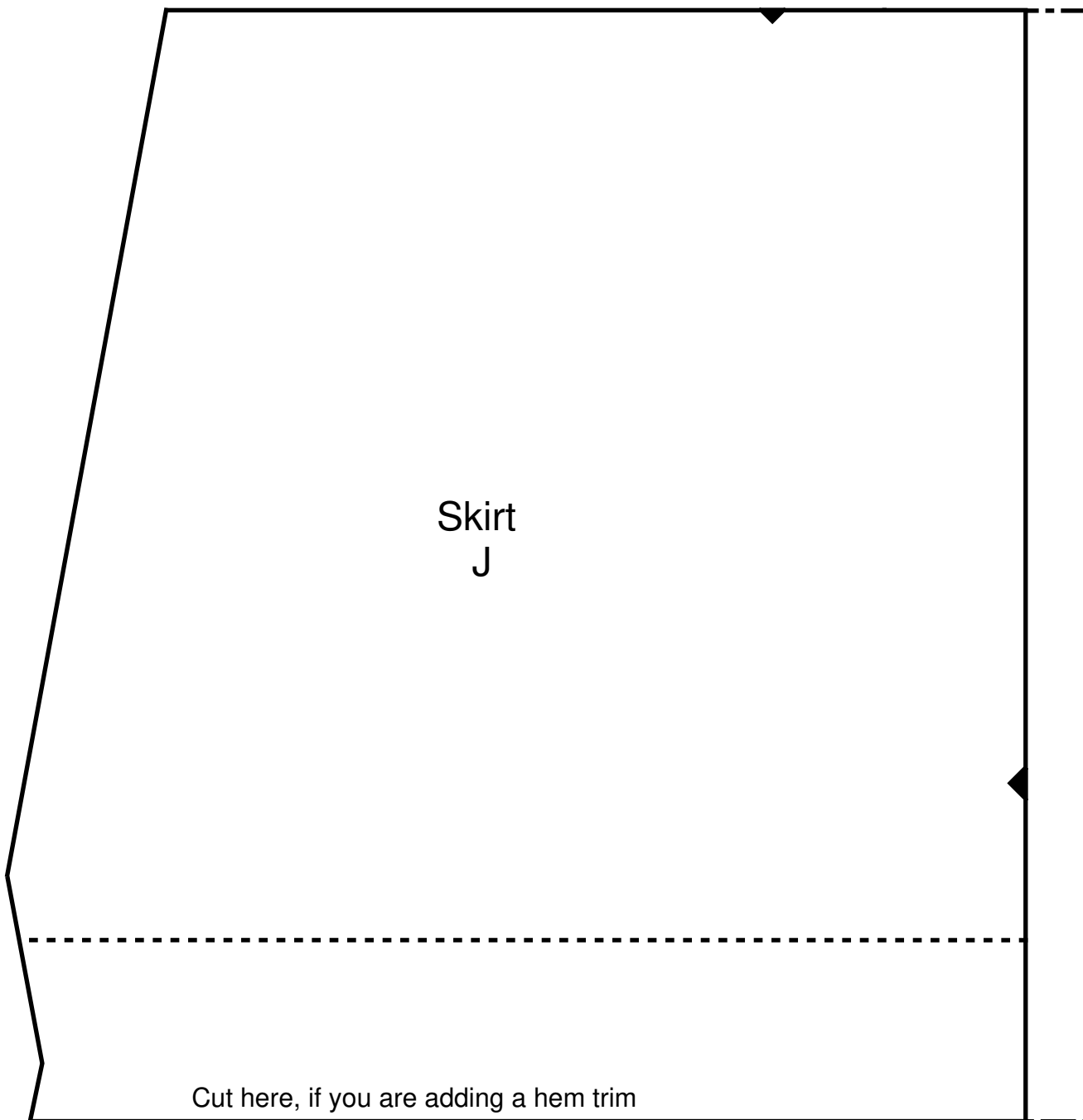
Skirt
B

to cut the lining, please shorten the pattern here

Skirt C

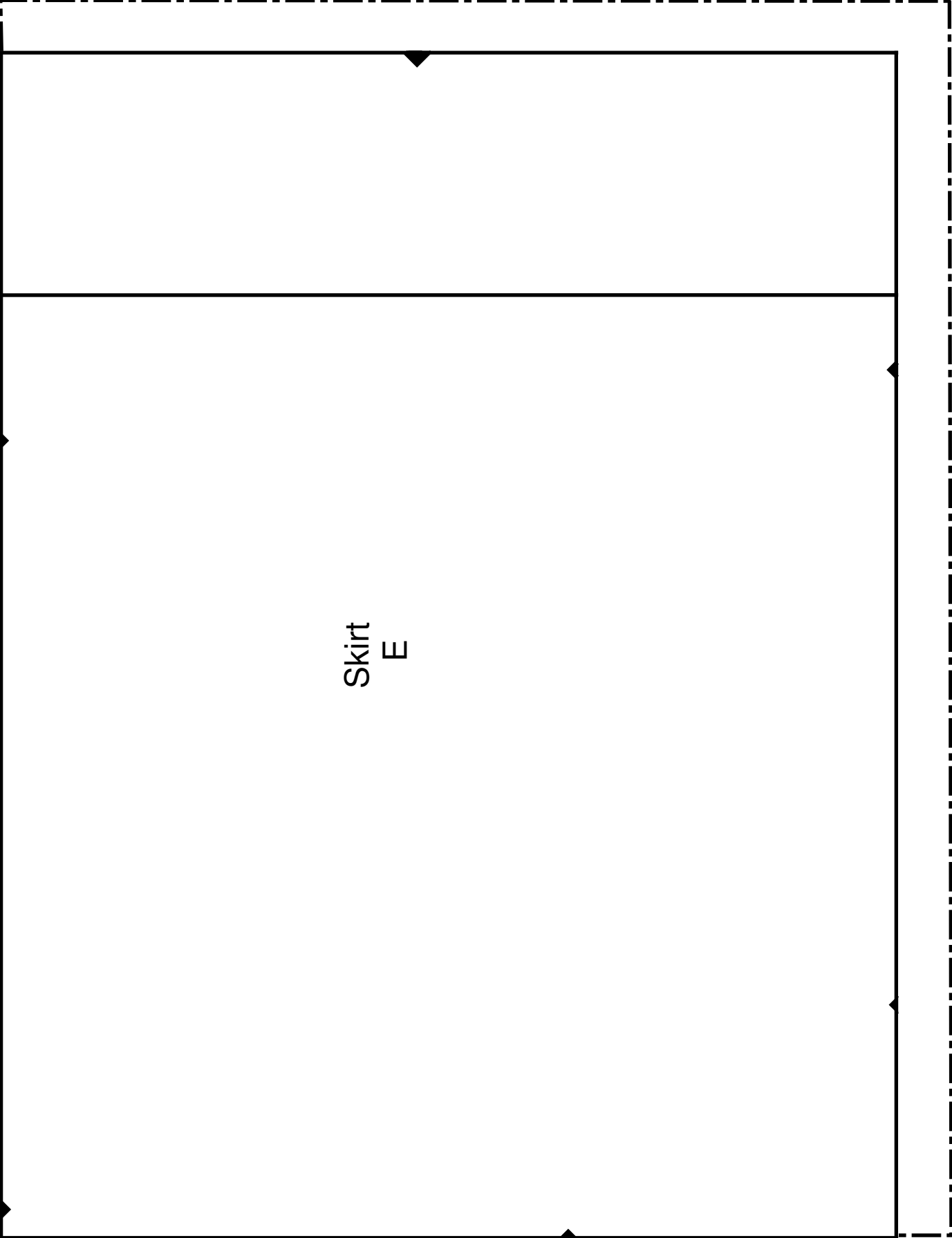
Close the back
skirt up to this
point





Skirt
J

Cut here, if you are adding a hem trim



Skirt
E

Flower Girl
Front & Back Skirt
F

Age 8-10

Cut the Front on the Fold:

- 1 x Shell
- 1 x Lining

Cut the Back :

- 2 x Shell (mirror image)
- 2 x Lining (mirror image)

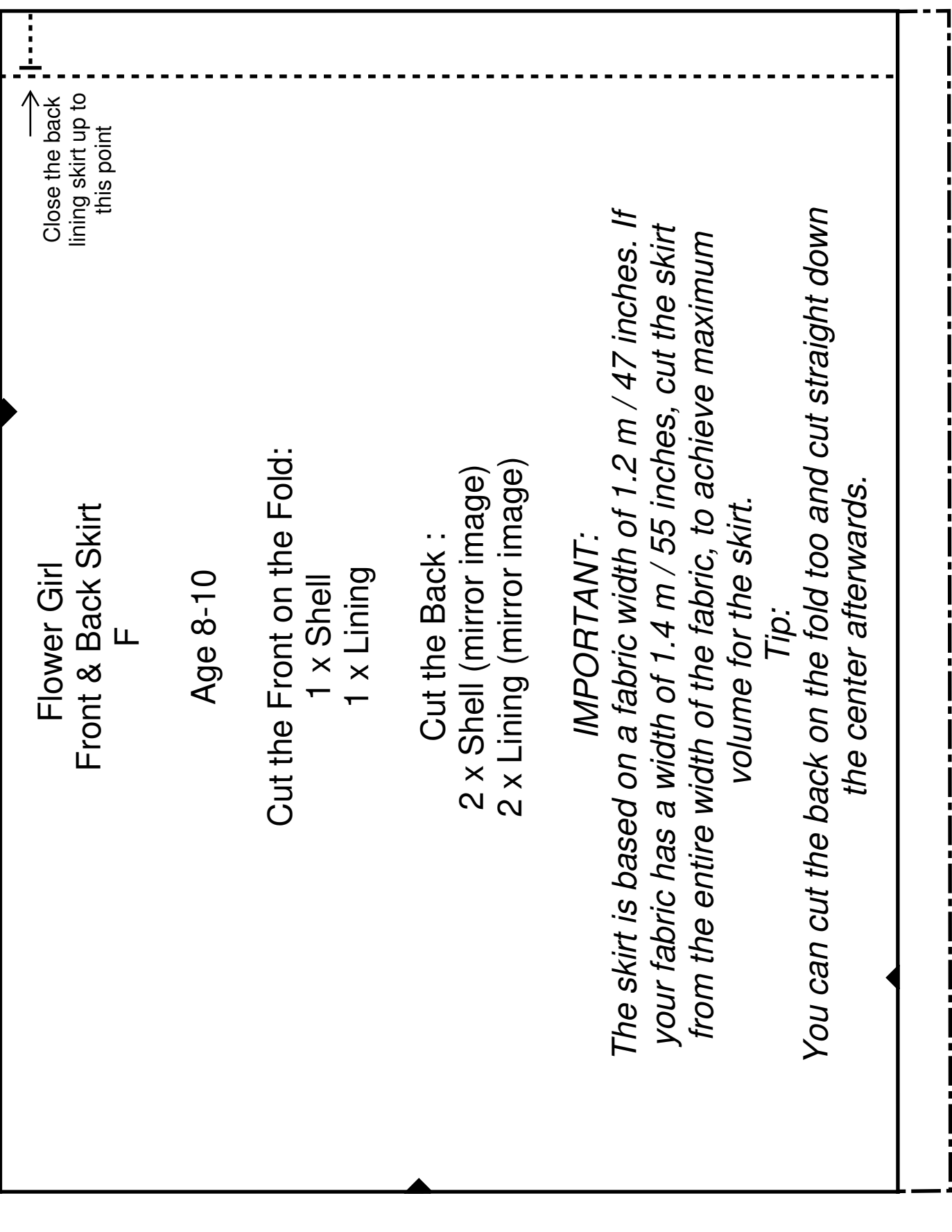
IMPORTANT:

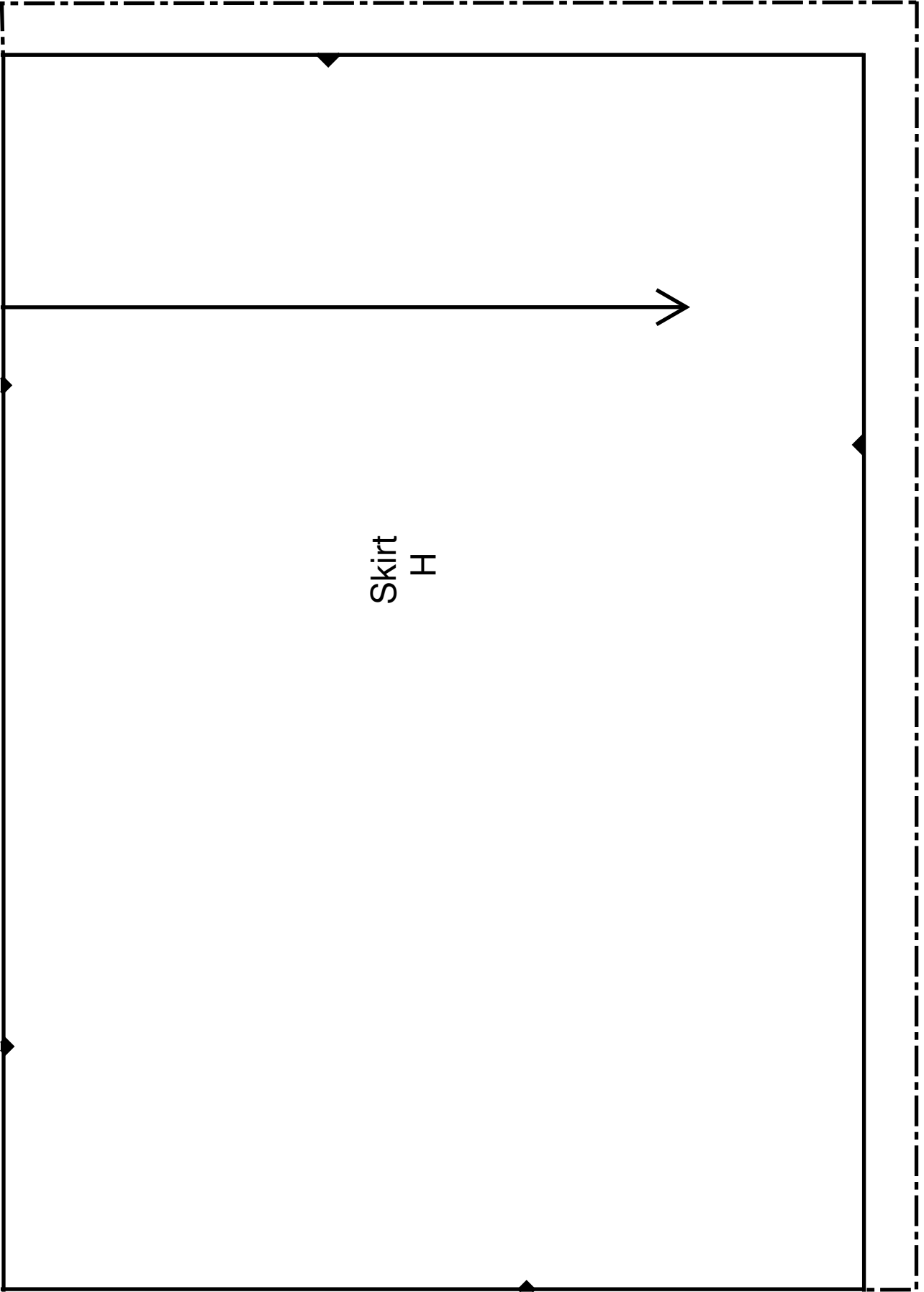
The skirt is based on a fabric width of 1.2 m / 47 inches. If your fabric has a width of 1.4 m / 55 inches, cut the skirt from the entire width of the fabric, to achieve maximum volume for the skirt.

Tip:

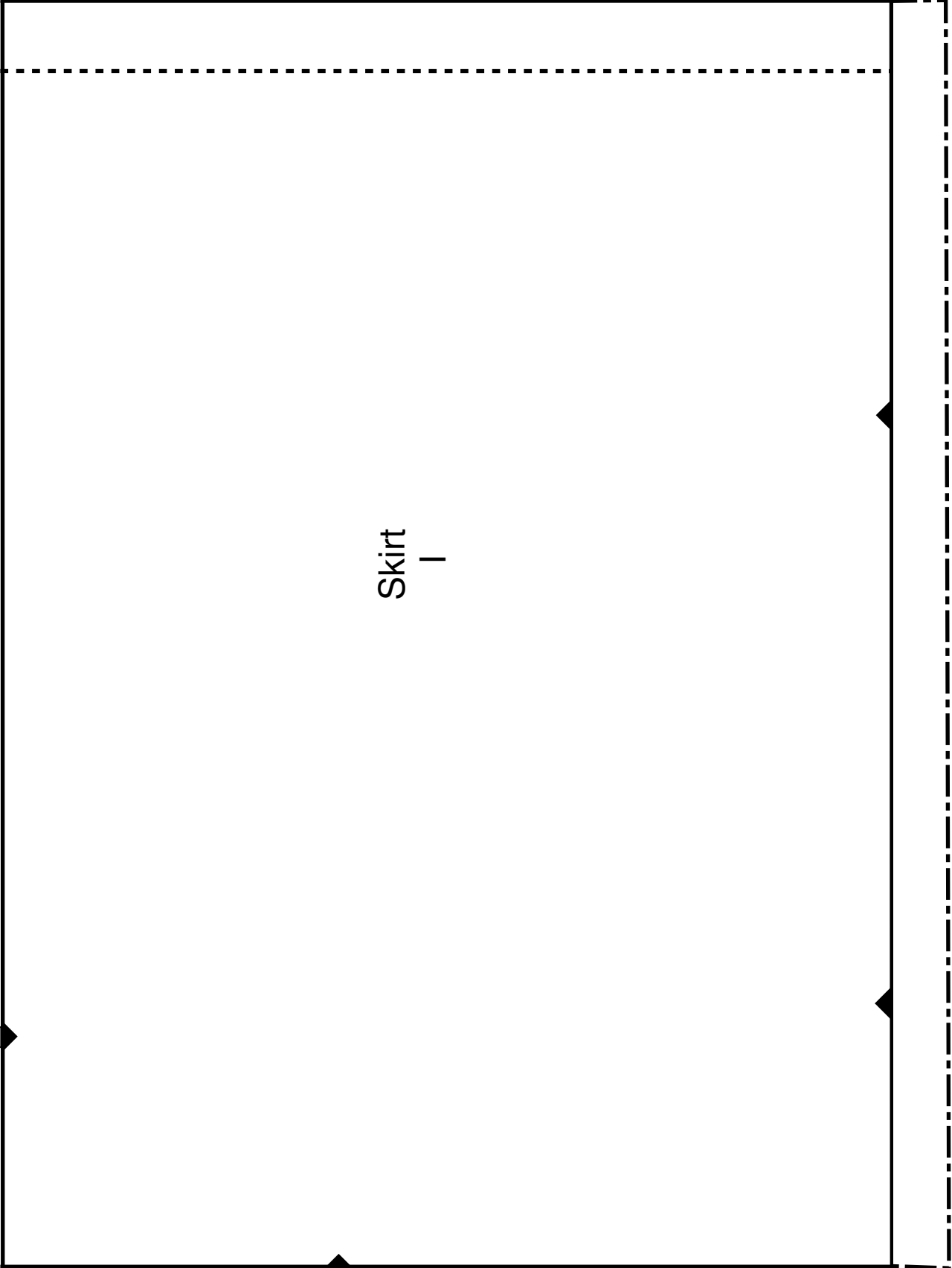
You can cut the back on the fold too and cut straight down the center afterwards.

Close the back
lining skirt up to
this point

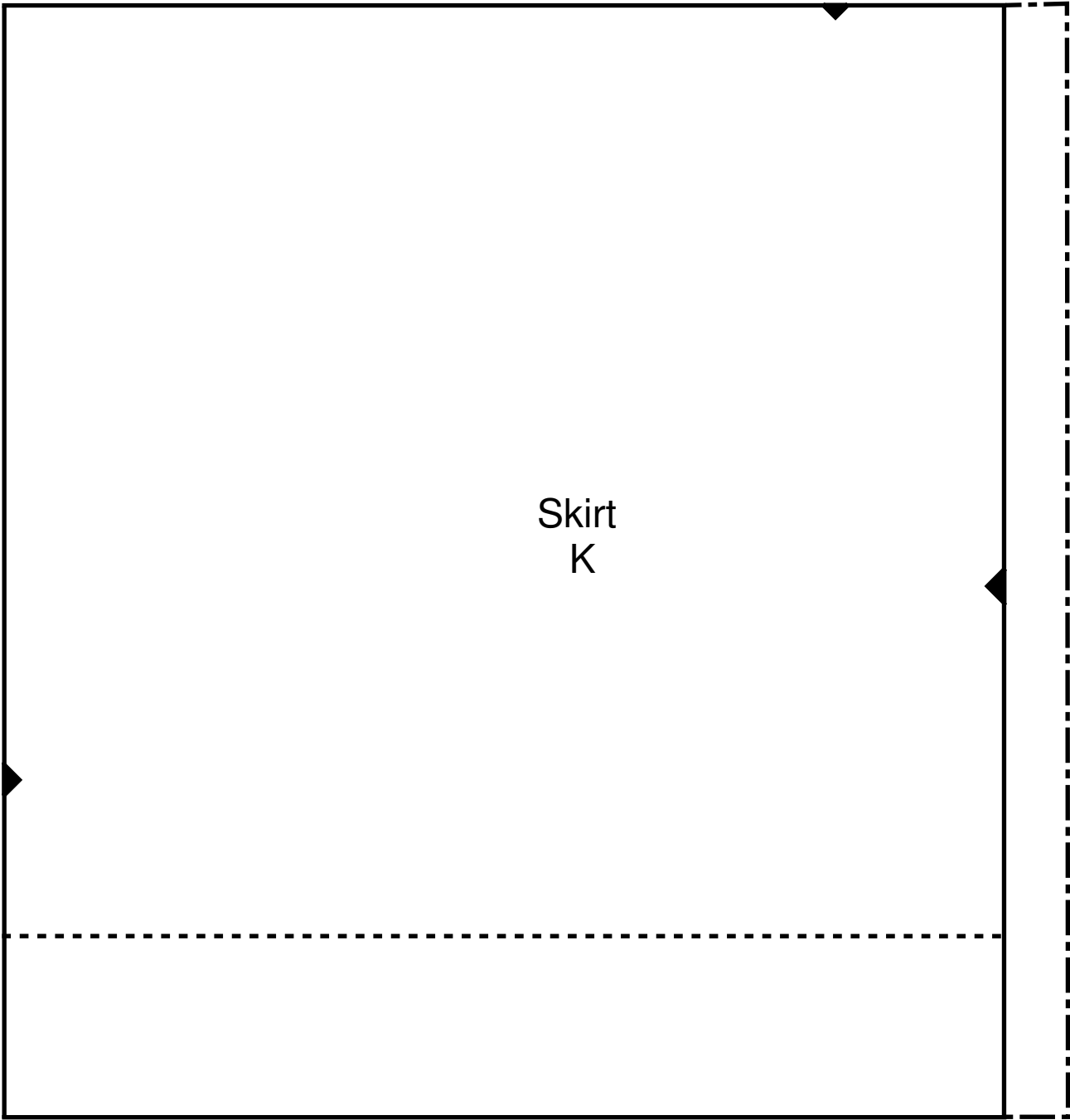




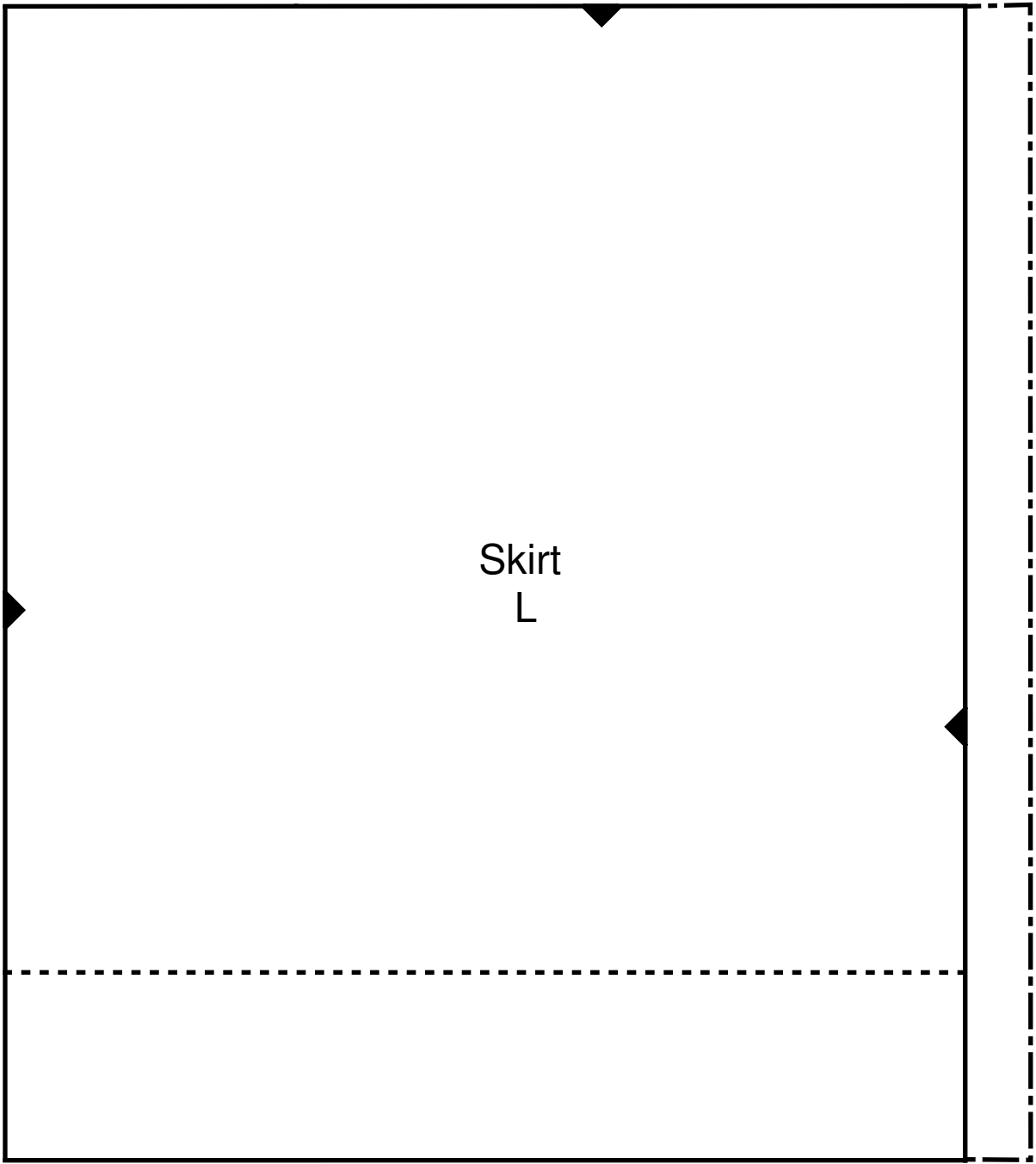
Skirt
H



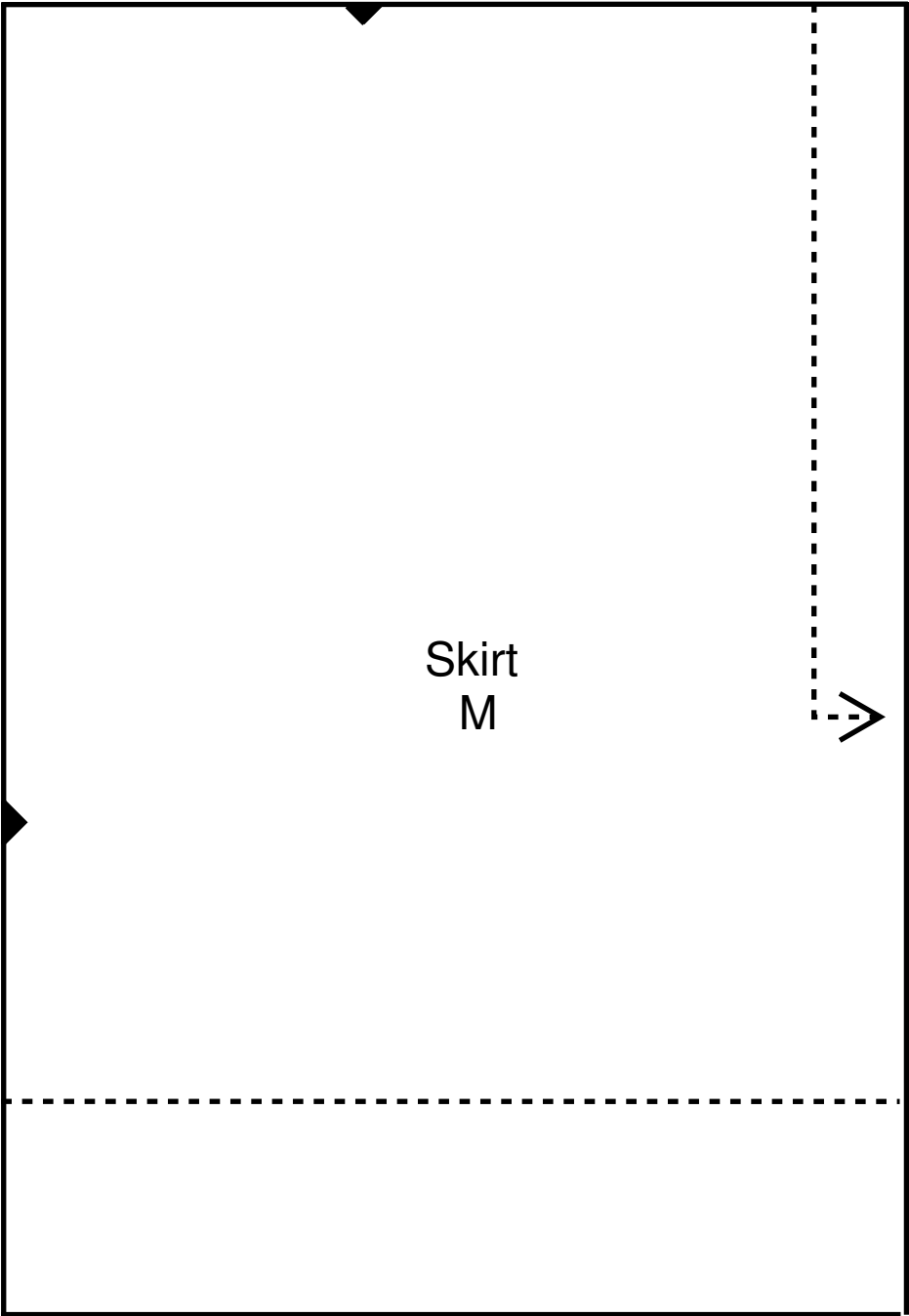
Skirt
1



Skirt
K



Skirt
L



How to assemble your Pattern

