

Beginners Bolero Jacket



Just View & Sew

Enjoy a pattern that is easy to print, assemble and fits perfectly.
The 'Online Class' will show you how its done and with these detailed
photo instruction to refer back to sewing will be a breeze!

FIRST STEPS

MEASURE - PRINT - CUT - CELLOTAPE

All patterns are based on the standard measurements for each age group. Measure the chest of your child to find out which size you need. If you want room to grow opt for the next size up. Please ensure you have the correct format. If you live in the USA you need the letter size format, if in Europe or Australia you will need the A4 format. If you accidentally ordered the wrong format, send me an e-mail and I will send you the correct format, which will work for you.

	Age 1-2 92cm	Age 2-3 98cm	Age 3-4 104cm	Age 4-5 110cm	Age 5-6 116cm
Waist	54 cm 21.3 inches	55 cm 21.7 inches	56 cm 22.1 inches	57 cm 22.4 inches	58 cm 22.9 inches
Chest	56 cm 22.1 inches	58 cm 22.9 inches	60 cm 23.6 inches	62 cm 24.4 inches	64 cm 25.2 inches
Back Length	23 cm 9.1 inches	25 cm 9.8 inches	26 cm 10.2 inches	27 cm 10.6 inches	28 cm 11 inches
Waist to knee	30 cm 11.8 inches	33 cm 13 inches	36 cm 14.2 inches	39 cm 15.4 inches	41 cm 16.1 inches



PRINTING

In each pattern you have the assembly instructions which show which pieces go together.

Print everything off ensuring you select the following print options:

- Actual Size
- Go into properties and select : borderless
- Check the 5cm test measurement.

Assemble the sleeve pattern and then follow the instructions for cutting on the pattern file. Please note that the cutting instructions and assembly can vary from size to size. I place as much on each piece of paper as I can, to save you paper and money.

Fabric

For the Bolero I used upholstery linen/cotton blend fabric lined with a lightweight printed cotton. This pattern will work in denim, cord, chambray, linen and dupion silk. In short any medium weight fabric which is relatively stiff will work a treat.

Sewing

The seam allowances of 1cm on all seams are included in the pattern.



What do I need to make the Bolero?

Shell: 50 cm / ½ yard

Lining in Contrast: Fat quarter/ 30 cm

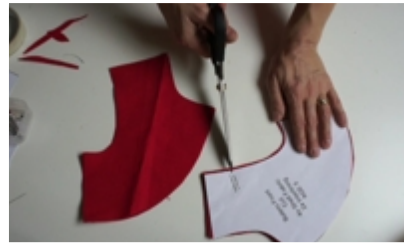
Notions: 1 button
Matching thread

Interlining (calico or curtain lining): 50 cm

Cutting out & Preparing the Back Lining



Cut the front 4x



Mark the 'gather point'



Cut front interlining 2x



Cut back 1x in lining, interlining & shell fabric

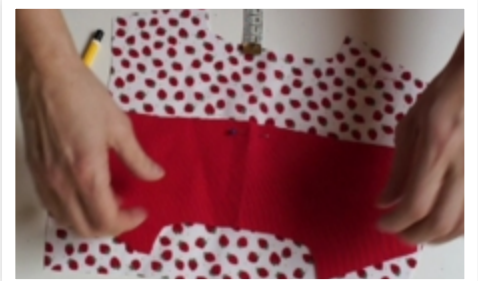


Mark the 'gather point'



Cut sleeve in 2x in lining & shell fabric

When you are cutting out you will probably find that the Bolero can quite easily be made out of a rest fabric and a fat quarter for the contrast lining. I hardly ever actually purchase specific fabric just for the jacket; to me its more of an accessory.



Start by putting the back facings on to the back lining. Placing the pattern piece 'Guide to attaching the facings to the lining' on your lining and mark the edge with either a pencil or tailors chalk. Pin the facings so they are just on that line! READY SET GO!



When pinned the facing should fit exactly on to the lining



Also pin the lower facing to the back lining

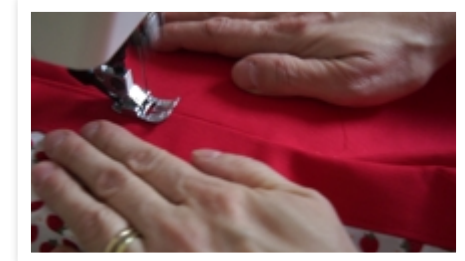
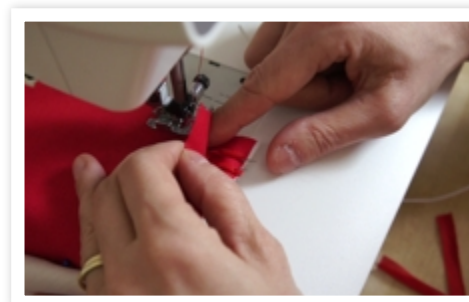
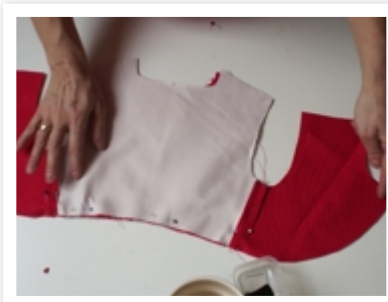
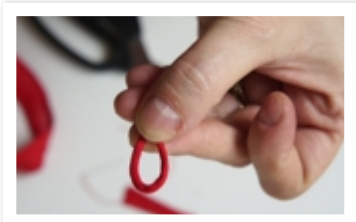
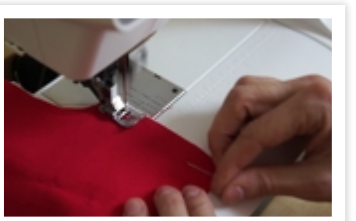
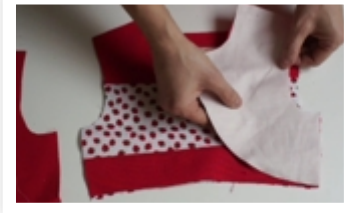


Sew the facings to the back with a 1cm seam allowance



Topstitch with stitch length 3, about 3mm from the seam

Assembly



Put your interlining on top of the wrong side of the lining front (also in the same fabric as the shell) and right sides facing on top of each other so that the side seams line up. Pin the side seams and sew with a 1 cm seam allowance. Now repeat for the shell (outside of the jacket)

Fashion the rouleaux loop, 4cm in length and pin to the right side of the Bolero front or left side of the Bolero lining. Please bear in mind that girls jackets close right over left. Stitch the loop into place.

Placing the right sides on top each other pin from shoulder to shoulder. Sew all the way around.

Cut back the seam allowance and snip the neckline and in the back hem area.

Folding the seam allowance towards the facing topstitch through all two three layers (facing, lining, outer back shell). Give the jacket a jolly good press.

Seams



The neckline will no longer match as you have done some understitching. Trim the excess and then place right sides facing the necklines on top of each other. Sew the neckline, cut back the seam allowance and clip the curve.

On the picture you should be able to see that second stitching line. Turn right sides out and press again.



Now you are ready to sew your shoulder seam, all in one go from shell over to the lining. Press seams apart and then trim where the seams meet as this can be a little heavy there. This very much depend on the fabric you use. Sometimes its flat enough without trimming.

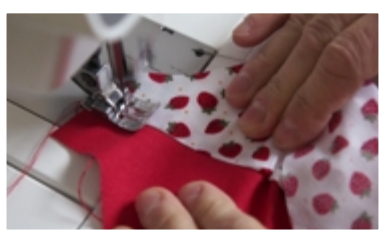
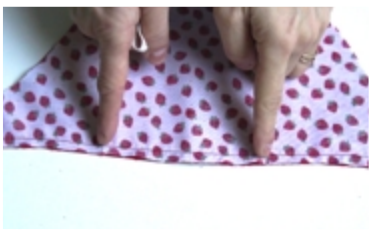
To secure the armhole, sew around with a large holding stitch close to the edge.



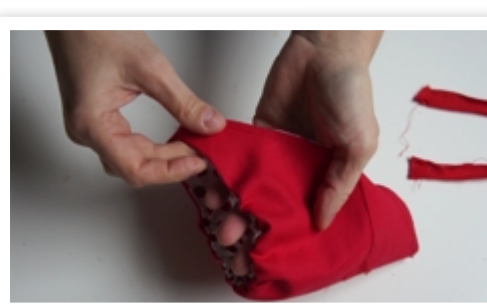
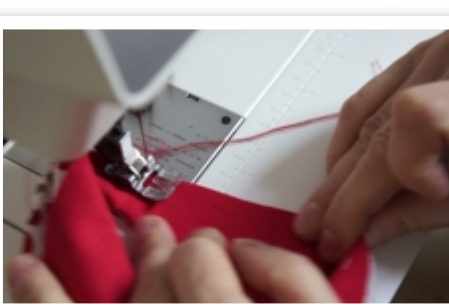
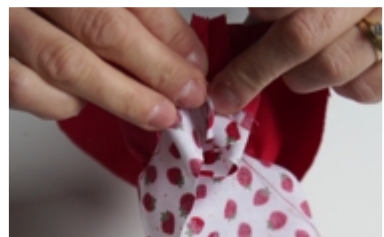
Sleeves



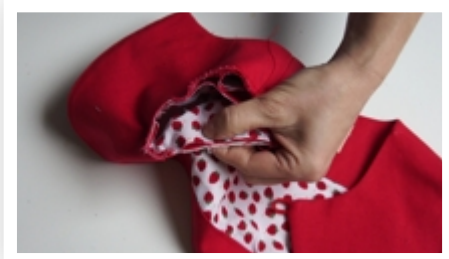
Ensure you have a pair of the shell fabric. Place the lining right side down on top and sew along the edge. Then attach the elastic from snip to snip.



To attach the elastic use a zig zag triple stitch, which is commonly used for briefs and other form of underwear requiring elastic. Close the sleeve seam from lining to shell fabric. Finger iron (or do it properly :)) and fold the seam allowances up so they are on top of each other.

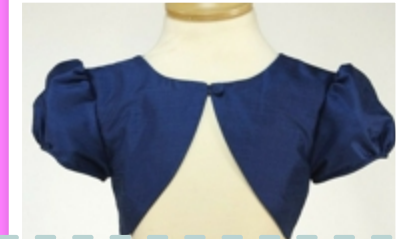


To make it easier to fit the sleeve sew all the way around the edge securing the lining to the shell fabric. You may want to pin this. Insert two gather stitch lines to the edge of the fabric. Pin the sleeve in. Pin the sleeve head mark to the shoulder seam and the sleeve seam on top of the under arm seam. Then pin in flat two pins up either side of the under arm seam. Pull the gather threads to fit. Arrange gathers to the gather mark (snip) and pin. Sew sleeve in.





You can now overlock the armhole or use a zig zag stitch to neaten the edge.
Finally choose a cute button and attach.



The bolero jacket is the ideal companion for a flower girl dress. To step it up a bit as I did here you can bind the edges with bias tape, either home made or bought. For more ideas please visit the projects page at frocksandfrolics.com.

